



2022 - 2023

OKEECHOBEE COUNTY

School

Information Guide



School Starts: Wednesday, August 10, 2022



(863) 763-3937

606 North Parrott Avenue • www.biglakeeyecare.com

Call now to schedule your eye appointment!



*Vicki S. Anderson,
Licensed Real Estate Broker
President,
Okeechobee Board of Realtors*

Vicki Anderson 863.634.4106

863.634.4107 Eric Anderson

*Your Top Realty Company
In Okeechobee
That Your Family Can Trust
To Be There For You!*

*We Service ALL Your
Real Estate Needs*



Shelly Doyle
Personal Assistant
863.801.8463
shellydoyle@ymail.com



Vicki S. Anderson
Licensed Real Estate Broker
863.634.4106 | vic_anderson@earthlink.net

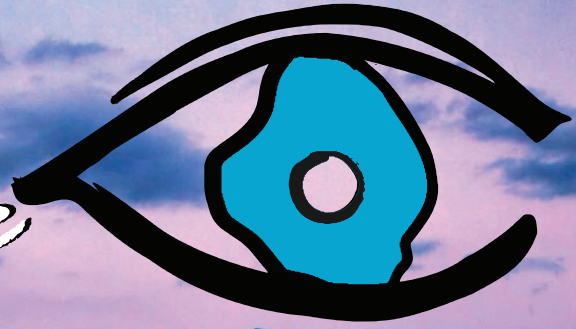
Eric W. Anderson
Licensed Real Estate Broker
863.634.4107

Shelly D. Doyle
Licensed Real Estate Agent
863.801.8463 | shellydoyle@ymail.com

30046 E. SR 78 BHR, Okeechobee, FL 34974

For all of our listings, please visit www.AndersonRealtyCo.com

Big Lake *Eye Care*



Board Certified Optometrist • Call Now For An Appointment • Walk-ins Welcome

Dr. Charles W. Bartels
Board Certified Optometric Physician
(863) 763-3937

PRESENT THIS BOOKLET AND RECEIVE
\$25 toward any
purchase or exam

May be used by multiple family members at time of visit.
Must be presented at time of visit. Use of one Gift Certificate per person.



- Comprehensive Eye Exams
- Contact Lens Fitting
- Variety of Colored Contacts
- State of the Art Optical Service
- Glaucoma Exams & Treatment
- Diabetic Eye Exams
- Cataract Evaluations
- Foreign Body Removal
- Tests & Treatments for Dry Eye

We Accept & Bill Most Major Insurance, Medicaid, Medicare & BCBS Healthy Kids

606 N. Parrott Ave - Okeechobee - 863-763-3937 - Visit: www.biglakeeyecare.com

TABLE OF CONTENTS

◆ Superintendent of Schools Letter	6
◆ Progress Report & Report Card Schedule	6
◆ School Start & End Times	7
◆ School Supply Lists	8
◆ School Calendar - English	10
◆ School Calendar - Spanish	11
◆ Central Elementary Principal Letter	12
◆ Central Elementary Bus Schedule	13
◆ Everglades Elementary Principal Letter	14
◆ Everglades Elementary Bus Schedule	15-17
◆ North Elementary Principal Letter	18
◆ North Elementary Bus Schedule	19-20
◆ Seminole Elementary Principal Letter	21-22
◆ Seminole Elementary Bus Schedule	22-23
◆ School Lunch Information	23
◆ South Elementary Principal Letter	24
◆ South Elementary Bus Schedule	25-26
◆ Osceola Middle School Principal Letter	27
◆ Osceola Middle School Bus Schedule	28-31
◆ Safety Smarts on the Bus	28
◆ Yearling Middle School Principal Letter	32
◆ Yearling Middle School Bus Schedule	33-36
◆ COVID-19 Safety Tips	36
◆ Okeechobee High School Principal Letter	37-38
◆ Okeechobee Achievement Academy Principal Letter	39
◆ Okeechobee Freshman Campus Principal Letter	39-40
◆ Okeechobee Virtual School Principal Letter	40
◆ Okeechobee High School/Achievement Academy/Freshman Campus Bus Schedule	41-47



GLADES

Electric Cooperative, Inc.

"Neighbors Working for Neighbors"



All the best to teachers and students this school year!



Learn with us year-round about programs, services, energy tips and more

WWW.FACEBOOK.COM/GLADESELECTRICCOOPERATIVE

www.GladesElectric.com 863.946.6200



Opening Doors is What We Do

Hazellief & Prevatt Realty

(863) 763-2104 • Se Habla Español

Residential ♦ Agriculture ♦ Commercial



David Hazellief, Broker
(863) 610-1553

Sharon Prevatt, Realtor
(863) 634-7069

Mark Goodbread, Realtor
(863) 634-6999

Lucy Olivarez
Office Manager

Carmen Guerrero
Customer Service



1200 South Parrott Ave.



century21okeechobee.com
admin@c21okee.com



OKEECHOBEE
VALUE SPECS
— South Parrott Eye Care Services —



Later Hours 5 Days A Week!
Monday - Friday
9am - 6pm

Schedule An Appointment
Online At
okeechobeevaluespecs.com

2 Pairs Of Glasses
for \$79
RESTRICTIONS APPLY

- Comprehensive Eye Exams -
- Contact Lens Fitting -
- Glaucoma Exams & Treatment -
- Diabetic Eye Exams -

Most Insurances Accepted

1611 South Parrott Ave - Okeechobee, Florida - 863.357.2250



WELCOME BACK TO School

School Family,

The excitement of a new school year is upon us. We return after a robust summer school program to face the 2022-23 school year with anticipation, hope, optimism, and enthusiasm. We have been preparing all summer for the return of students. Collectively, thousands of hours of planning and professional development have occurred so that we can continue our academic momentum into the new year. Our maintenance and custodial staff have been feverishly working to make sure each campus is ready to receive our students.

As we reflect on last school year, we are fortunate that many schools reached proficiency rates and learning gains higher than pre-pandemic performance. The graduation rate increased, industry certifications are up, thousands of meals were fed over the summer, and hundreds of credits were retrieved this summer. The dedication of our staff, the encouragement of our families and the resiliency of our students created opportunities for this rebound. Congratulations to you all!

As we redesign our programming, curriculum and way of work to concentrate on results this school year, several changes will occur. We have new math and English Language Arts textbooks for elementary, Freckle and Lalilo replaces i-Ready, new BEST standards will be taught at all grade levels and FSA is being replaced by a new progress monitoring system. Career and technical education opportunities are being expanded, PreK is now available at every elementary school and we will break ground on the new high school.

This guide contains a wealth of information to get school started. However, daily attendance is crucial for students to absorb all of our instruction and curriculum on the standards for promotion.

We hope to see you at open house, at school events, volunteering, and joining together with us to make sure your child's experience is rewarding and helps them achieve their next step of promotion, graduation, victory or certification. It is only after all of these are accomplished can we call ourselves a success. Together, Achieving Excellence by Putting Students First.



Sincerely,
Ken Kenworthy, Superintendent of Schools

2022-2023 Progress Report & Report Card Schedule

First Nine-Weeks	Second Nine-Weeks	Third Nine-Weeks	Fourth Nine-Weeks
Thursday, September 8 Send Progress Reports Home	Tuesday, November 10 Send Progress Reports Home	Thursday, February 9 Send Progress Reports Home	Wednesday, April 19 Send Progress Reports Home
Friday, October 14 Last day of Nine-Week Grading Period	Monday, January 4 Last Day of Nine-Week Grading Period	Friday, March 10 Last Day of Nine-Week Grading Period	Friday, May 26 Last Day of Nine-Week Grading Period
Tuesday, October 18 Direct Entry completed by 9:00 a.m.	Tuesday, January 10 Direct Entry completed by 9:00 a.m.	Tuesday, March 21 Direct Entry completed by 9:00 a.m.	Wednesday, May 31 Print Verifications by Noon Direct Entry completed by 5:00 p.m.
Wednesday, October 19 Print Report Cards at school site	Wednesday, January 11 Print Report Cards at school site	Wednesday, March 22 Print Report Cards at school site	Wednesday, June 14 Report Cards Printed at school site
Monday, October 24 Report Card Day (All Schools)	Tuesday, January 17 Report Card Day (All Schools)	Friday, March 24 Report Card Day (All Schools)	Tuesday, June 20 Report Cards Mailed/ Available for Pick-Up at School (Elementary)
			Friday, June 23 Report Cards (Middle Schools, OFC and OHS)



Okeechobee County Schools 2022-2023 Start & End Times

Regular School Day - Start and End Times

	Start Time	End Time
Okeechobee High School	7:04 a.m.	2:10 p.m.
Freshman Campus	7:15 a.m.	1:45 p.m.
Okeechobee Achievement Academy (middle/high)	7:20 a.m.	1:50 p.m.
Middle Schools (Osceola & Yearling)	9:00 a.m.	3:40 p.m.
Elementary Schools (Central, Everglades, North, Seminole, South Elementary & OAA elementary)	8:10 a.m.	2:50 p.m.

Early Release Dates for 2022-2024 School Year

Friday, September 9	Friday, February 17
Friday, November 18	Friday, April 21
Friday, December 23	Friday, May 26

Early Release Day - Start and End Times

	Start Time	End Time
Okeechobee High School	7:04 a.m.	10:50 a.m.
Freshman Campus	7:15 a.m.	10:30 a.m.
Okeechobee Achievement Academy (middle/high)	7:20 a.m.	10:30 a.m.
Middle Schools (Osceola & Yearling)	9:00 a.m.	12:20 p.m.
Elementary Schools (Central, Everglades, North, Seminole, South Elementary & OAA elementary)	8:10 a.m.	11:30 a.m.

Open House - Start and End Times

Level/School	Date	Times
Okeechobee Virtual School	Thursday, August 4	6-8 p.m.
Okeechobee High School Sophomores		
All Elementary Schools	Monday, August 8	5-7 p.m.
All Middle Schools	Monday, August 8	6-8 p.m.
Okeechobee Achievement Academy		
Okeechobee Freshman Campus	Monday, August 8	7-9 p.m.
Okeechobee High School		

If you are unable to attend Open House, student schedules will be available on Skyward Family Access.



Okeechobee County 2022-23 School Supplies Lists

Elementary Essentials

Pre-Kindergarten

- Glue Sticks
- Watercolor Markers
- Vinyl Folders* (3 prong w/pocket)
- Crayons
- Highlighters
- Lanyard
- Rest Mat
- Blanket or Towel for Rest Time
- Complete Change of Clothes
- Personal Water Bottle
- Face Mask **OPTIONAL**

Kindergarten & First Grade

- Glue Sticks
- White Glue
- Vinyl Folders* (3 prong w/pocket)
- Scissors
- Plastic Supply Box (Kindergarten)
- Crayons
- #2 Pencils
- Erasers
- Highlighters
- 1st Grade Writing Tablet (1st Grade)
- Zippered Pencil Pouch (1st Grade)
- Personal Water Bottle
- Face Mask **OPTIONAL**

Second & Third Grade

- Glue Sticks
- Vinyl Folders* (3 prong w/pocket)
- Scissors
- Zippered Pencil Pouch
- Crayons
- Colored Pencils
- #2 Pencils
- Erasers
- Wide-ruled Notebook Paper
- Highlighters
- Personal Water Bottle
- Face Mask **OPTIONAL**

Fourth & Fifth Grade

- Glue Sticks
- Vinyl Folders* (3 prong w/pocket)
- Scissors
- Zippered Pencil Pouch
- Crayons
- Colored Pencils
- #2 Pencils
- Erasers
- Wide-ruled Notebook Paper
- Highlighters
- Ruler with Inches & Centimeters
- Personal Water Bottle
- Face Mask **OPTIONAL**

Optional

- Backpack* – No Wheels
- Three Ring Binder
- Composition Book
- Earbuds/Headphones
- Dry Erase Markers

Optional for All Classrooms

- Tissues
- Zip-top Bags (elementary schools)
- Hand Sanitizer**
- Disinfectant Wipes**

* Please consider vinyl, plastic or poly folders and backpacks so they can be sanitized

** Every classroom would appreciate additional COVID-19 supplies

Secondary Essentials

Middle School Grades 6-8

- Earbuds/Headphones
- Glue Sticks
- Scissors
- #2 Pencils
- Colored Pencils
- Erasers
- Loose Leaf Notebook Paper
- Single Subject Spiral Notebooks (4)
- 1-3 Subject Spiral Notebooks
- Sticky Notes (pack of 100)
- Highlighters
- Index Cards (3x5, lined, packed of 100)
- Dry Erase Markers
- Page Protectors
- Binder Clips (medium)
- Personal Water Bottle
- Face Mask **OPTIONAL**

Middle School Subject Specific

- Algebra I & Geometry:
 - Calculator: TI-30 XA
 - 1-3 Subject Spiral Notebook
- Band:
 - Three Ring Binder (1 inch)

High School Grades 9-12

- Earbuds/Headphones
- Glue Sticks/Tape
- Scissors
- #2 Pencils
- Colored Pencils
- Zippered Pencil Pouch
- Loose Leaf Notebook Paper
- Blue and/or Black Pens
- Single Subject Spiral Notebooks (1 per subject, per grading period)
- Exceptions below ❖
 - Highlighters
 - Index Cards (3x5, lined, packed of 100)
 - Personal Water Bottle
 - Face Mask **OPTIONAL**

High School Subject Specific

- Calculators:
 - Algebra I & Geometry: TI-30 XA
 - AP Chemistry, AP Environmental Science, AP Calculus: TI-84
- ❖ Five Subject Spiral Notebooks
 - All Science Courses
 - Pre AP English I
 - Geometry
 - Algebra 2
- Graph Paper:
 - Chemistry
 - AP Chemistry
 - Physics
- Composition Notebook:
 - Chemistry
 - Physics
- Art:
 - 9" x 12" Spiral Sketchbook

These are all generic lists. Your child's teacher may have a more personalized list.



YOUR SMILE SAYS IT ALL

We've been creating beautiful smiles in Okeechobee for over 35 years. Isn't it time to see what we can do for you?



Family Orthodontics

Making a difference one smile at a time

2025 Hwy 441 North
863.467.2332

When it comes to your to-do list, put your future first.

To find out how to get your financial goals on track, contact us for a complimentary review.



Sharon A Covey

Financial Advisor

107 Southwest 17th Street
Suite J
Okeechobee, FL 34974
863-357-4724

edwardjones.com
Member SIPC

Edward Jones
MAKING SENSE OF INVESTING

FAP-1966F-A

Cooling Refrigeration SERVICES
Heating & A/C Service
863.467.4733

18 Years
2004-2022

24 hour emergency service
Residential www.crsokee.com Commercial

Legacy
Real Estate of Florida

Wishing Our
★ Students & Teachers a ★
SAFE & SUCCESSFUL SCHOOL YEAR

Lasha Boree, Broker

View our listings online at legacyrealtyfl.com

Office: 863-484-8588 • 101 SW 3rd Ave. • Okeechobee

2022-2023 Okaloosa County School Board
Calendar Instructivo



Septiembre 2022

Agosto 2022

Julio 2022

S	M	T	W	T	F	S	S	M	T	W	T	F	S	S	M	T	W	T	F	S	
					1	2		1	2	3	4	5	6								
3	4	5	6	7	8	9		7	8	9	10	11	12	13							
10	11	12	13	14	15	16		14	15	16	17	18	19	20							
17	18	19	20	21	22	23		21	22	23	24	25	26	27							
24	25	26	27	28	29	30		28	29	30	31										
/31																					

Lunes Se reportan nuevos maestros
Miércoles Regresan los maestros
Lunes Casa abierta
Miércoles Primer día de estudiantes
Lunes Día Festivo-Día del Trabajador
Viernes Estudiantes salen temprano
Viernes Fin primer 9 semanas (47 días)
Lunes Día de plan de maestros(no estudiantes)
Viernes Estudiantes salen temprano
Lunes *Día de Descanso/Primer día para reponer en caso de una emergencia
Martes Día de Descanso/Segundo día para reponer en caso de una emergencia
Miércoles Día de Descanso
Jueves Día Festivo-Acción de Gracias
Viernes Día de Descanso
Viernes Estudiantes salen temprano
Viernes Último día de clases antes de las vacaciones
Viernes Fin 9 2as Semanas (44 días)
Viernes Fin primer semestre (91 días)
Lunes Día Festivo-Navidad
Mart-Vier Receso de Inverno
Lunes Día Festivo-Año Nuevo
Mart-Vier Receso de Inverno
Lunes Día de Plan de maestros(no estudiantes)
Martes Primer día de clases después de las vacaciones
Lunes Día Festivo-Día de Martin Luther King
Viernes Estudiantes salen temprano
Lunes Día Festivo día de los Presidentes
Viernes Fin terceras 9 semanas(42 días)
Lun-Vier Receso de Primavera(no maestros no estudiantes)
Lunes Día de plan de maestros(no estudiantes))
Viernes Viernes Santo(no maestros,no estudiantes)
Lunes Día de plan de maestros(no estudiantes)
Viernes Estudiantes salen temprano
Viernes Fin cuatro 9 semanas(47 días)
Viernes Fin Segundo semestre(89 días)
Viernes Último día para estudiantes(180 días)
Lunes Día Festivo-Día de los Caídos
Martes Último día de 196/196 días maestros

Diciembre 2022

Noviembre 2022

Octubre 2022

S	M	T	W	T	F	S	S	M	T	W	T	F	S	S	M	T	W	T	F	S	
						1		1	2	3	4	5									
2	3	4	5	6	7	8		6	7	8	9	10	11	12							
9	10	11	12	13	14	15		13	14	15	16	17	18	19							
16	17	18	19	20	21	22		20	21	22	23	24	25	26							
23	24	25	26	27	28	29		27	28	29	30										
30	31																				

Viernes Estudiantes salen temprano
Viernes Último día de clases antes de las vacaciones
Viernes Fin 9 2as Semanas (44 días)
Viernes Fin primer semestre (91 días)
Lunes Día Festivo-Navidad
Mart-Vier Receso de Inverno
Lunes Día Festivo-Año Nuevo
Mart-Vier Receso de Inverno
Lunes Día de Plan de maestros(no estudiantes)
Martes Primer día de clases después de las vacaciones
Lunes Día Festivo-Día de Martin Luther King
Viernes Estudiantes salen temprano
Lunes Día Festivo día de los Presidentes
Viernes Fin terceras 9 semanas(42 días)
Lun-Vier Receso de Primavera(no maestros no estudiantes)
Lunes Día de plan de maestros(no estudiantes))
Viernes Viernes Santo(no maestros,no estudiantes)
Lunes Día de plan de maestros(no estudiantes)
Viernes Estudiantes salen temprano
Viernes Fin cuatro 9 semanas(47 días)
Viernes Fin Segundo semestre(89 días)
Viernes Último día para estudiantes(180 días)
Lunes Día Festivo-Día de los Caídos
Martes Último día de 196/196 días maestros

Marzo 2023

Febrero 2023

Enero 2023

S	M	T	W	T	F	S	S	M	T	W	T	F	S	S	M	T	W	T	F	S	
						1		1	2	3	4										
8	9	10	11	12	13	14		5	6	7	8	9	10	11							
15	16	17	18	19	20	21		12	13	14	15	16	17	18							
22	23	24	25	26	27	28		19	20	21	22	23	24	25							
29	30	31						26	27	28											

Viernes Estudiantes salen temprano
Lunes Día Festivo día de los Presidentes
Viernes Fin terceras 9 semanas(42 días)
Lun-Vier Receso de Primavera(no maestros no estudiantes)
Lunes Día de plan de maestros(no estudiantes))
Viernes Viernes Santo(no maestros,no estudiantes)
Lunes Día de plan de maestros(no estudiantes)
Viernes Estudiantes salen temprano
Viernes Fin cuatro 9 semanas(47 días)
Viernes Fin Segundo semestre(89 días)
Viernes Último día para estudiantes(180 días)
Lunes Día Festivo-Día de los Caídos
Martes Último día de 196/196 días maestros

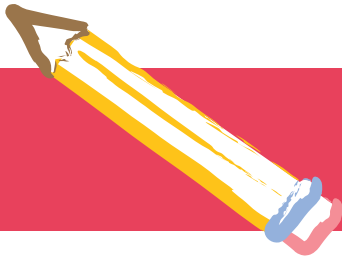
Junio 2023

Mayo 2023

Abril 2023

S	M	T	W	T	F	S	S	M	T	W	T	F	S	S	M	T	W	T	F	S	
						1		1	2	3	4	5	6								
2	3	4	5	6	7	8		7	8	9	10	11	12	13							
9	10	11	12	13	14	15		14	15	16	17	18	19	20							
16	17	18	19	20	21	22		21	22	23	24	25	26	27							
23/30	24	25	26	27	28	29		28	29	30	31										

Sábado Graduacion
Martes Tarjetas de calificación enviadas-Elem
Viernes Tarjetas de calificación enviadas -Secundaria
Junio 23 *En caso que las escuelas estén cerradas por un huracán u otra emergencia estos son los días de repuesla
Fin 9 semanas
No maestros/ No estudiantes
Día Festivo
Se reportan nuevos maestros
Día de clases
Día de Plan/ no estudiantes
Estudiantes salen temprano
Reportes de Progreso
Reportes de calificaciones
Día de Huracan



Central Elementary strives to put students first

Dear Central Elementary Parents and Families,

Welcome to the 2022-2023 school year! We hope you had a great summer, where lasting memories were made! Our faculty and staff are excited to welcome you and your students back and to provide meaningful learning experiences where students can excel academically, socially and emotionally.

Our teachers have been working during the summer in professional development, planning sessions and getting ready to welcome back our students! We hope you will join us for Open House on Monday, August 8, 2022 from 5:00-7:00 p.m. as we welcome you back to school. We value you and know we are stronger through the commitment of our parents, families and community.

Our work this year will continue to focus on developing our Professional Learning Communities (PLC) for teachers, Academic Parent Teacher Teams (APTT) for parents, Data/Exemplar binders for students and providing a safe environment where students can learn through rigorous instruction. This will enable them to excel academically, socially, and emotionally. We look forward to a great school year where AMAZING things happen for our students! Thank you for your hard work and dedication during this past school year! Our FSA overall percentage went from 28 percent in 20-21 to 45 percent in 21-22! That truly is an incredible accomplishment and it is all due to the hard work put in by our students, staff, and families. We are a 'C' school and this new school year is an opportunity to continue this work and increase our school grade! We invite you to take advantage of the many opportunities and events this year to support student learning and make this our best year yet!

Here are a few helpful reminders for this year's kick-off!

FIRST DAY OF SCHOOL: Wednesday, August 10, 2022

SCHOOL HOURS: Classes officially begin at 8:10 a.m. with adult supervision and drop off beginning at 7:40 a.m. Any student dropped off after 8:10 a.m. must be accompanied into the office and be signed in by an adult. Students will be dismissed at 2:50 p.m. and adult supervision ends at 3:15 p.m.

ATTENDANCE/TARDIES/CHECK-OUTS: Did you know that Central Elementary had the highest attendance rates in Okeechobee Schools last year? Research shows that students with great attendance have higher achievement rates. To the extent possible, we ask that students arrive on time and attend school everyday, ALL day. Not only do we not want students to miss valuable instructional time, but it can also interrupt the instructional time of others. We ask that you try to schedule appointments for your child after school. In the event that you need to checkout your child prior to the end of the day, please do so no later than 2:30 p.m. Students will only be released to parents in the pick-up line. After 3:15 p.m. students may be picked up from the office.

MEALS: Breakfast and lunch will be provided at no cost to all students.

OPEN HOUSE: Our first family event will be Open House on Monday, August 8, 2022. Watch our Facebook account for more details at: facebook.com/CentralElementaryOkee. This will be a wonderful opportunity to meet your child's teacher(s). School t-shirts and yearbooks will be available for purchase.

AGENDAS: All students will be provided with a school agenda which contains our Student Handbook in the front. We ask that you and your child sign the COMPACT at the end of the Student Handbook.

PARENT & FAMILY ENGAGEMENT: During Open House, you will have the opportunity to learn more about and join our School Advisory Council (SAC), Parent Teacher Organization (PTO), and Panther Community Partners. These organizations are opportunities for you to give input regarding our school budget, school improvement initiatives, fundraisers, school activities and student incentives. Throughout the year, workshops will be provided to help families support academics both at school and at home.

GO PANTHERS!

Cynthia Kubit

Principal, Central Elementary School





CENTRAL ELEMENTARY

BUS SCHEDULE

02 CES AM

TIME	LOCATION
7:12 am	NW 6th St & NW 3rd Ave
7:14 am	NW 5th Ave & Box 209
7:15 am	NW 10th Ave & NW 3rd St
7:16 am	NW 11th Ave & NW 3rd St
7:17 am	70 W & Box 1659
7:18 am	NW 18th Ave & NW 5th St
7:19 am	NW 11th Ave & NW 7th St
7:20 am	NW 10th Ave & NW 5th St
7:25 am	SW 2nd St & SW 9th Ave
7:27 am	SW 11th Ave & SW 3rd St
7:29 am	SW 8th St & SW 13th Ave
7:31 am	SW 11th Ave & SW 11th St
7:32 am	SW 9th St & SW 10th Ave

02 CES PM

TIME	LOCATION
3:22 pm	SW 9th St & SW 10th Ave
3:23 pm	SW 11th Ave & SW 11th St
3:25 pm	SW 8th St & SW 13th Ave
3:28 pm	SW 11th Ave & SW 3rd St
3:30 pm	SW 2nd St & SW 9th Ave
3:34 pm	70 W & Box 1659
3:36 pm	NW 18th Ave & NW 5th St
3:38 pm	NW 11th Ave & NW 7th St
3:39 pm	NW 10th Ave & NW 5th St
3:40 pm	NW 11th Ave & NW 3rd St
3:41 pm	NW 10th Ave & NW 3rd St
3:43 pm	NW 5th Ave & Box 209
3:45 pm	NW 6th St & NW 3rd Ave

22 CES AM

TIME	LOCATION
7:45 am	NW 26th Ave & NW 8th St
7:46 am	NW 26th Ave & NW 5th St
7:47 am	NW 22nd Ave & NW 4th St
7:48 am	NW 28th Ave & NW 3rd St
7:49 am	NW 28th Ave & NW 1st St

05 CES AM

TIME	LOCATION
7:08 am	SE 4th Ave & SE 4th St
7:10 am	SE 3rd Ave & SE 3rd St
7:15 am	SE 8th Dr & SE 3rd St
7:17 am	SE 8TH DR & SE 4TH ST
7:20 am	SE 8 Ave & SE 6th Ct
7:22 am	SE 8th Ave & SE 10th St
7:24 am	SE 8th Dr & SE 12 St
7:25 am	SE 8th Dr & SE 14th St
7:31 am	SE 9th Ave & SE 21 St
7:36 am	SE 10th St & SE 9th Ave
7:38 am	SE 9th Ave & SE 8th St
7:39 am	SE 10th Ave & SE 5th St
7:40 am	SE 10th Ave & J&W

05 CES PM

TIME	LOCATION
3:00 pm	SE 4th Ave & SE 4th St
3:01 pm	SE 3rd Ave & SE 3rd St
3:07 pm	SE 8th Dr & SE 3rd St
3:09 pm	SE 8TH DR & SE 4TH ST
3:11 pm	SE 8 Ave & SE 6th Ct
3:13 pm	SE 8th Ave & SE 10th St
3:14 pm	SE 8th Dr & SE 12 St
3:15 pm	SE 8th Dr & SE 14th St
3:19 pm	SE 9th Ave & SE 21 St
3:23 pm	SE 10th St & SE 9th Ave
3:24 pm	SE 9th Ave & SE 8th St
3:26 pm	SE 10th Ave & SE 5th St
3:27 pm	SE 10th Ave & J&W

22 CES PM

TIME	LOCATION
3:00 pm	NW 28th Ave & NW 1st St
3:01 pm	NW 28th Ave & NW 3rd St
3:03 pm	NW 22nd Ave & NW 4th St
3:05 pm	NW 26th Ave & NW 5th St
3:06 pm	NW 26th Ave & NW 8th St

27 CES AM

TIME	LOCATION
7:15 am	SE 16th Ave & SE 6th Ln
7:16 am	SE 14th Ave & SE 8th St
7:18 am	SE 13th Ave & SE 4th St
7:22 am	NE 14th Ave & NE 10th St
7:25 am	70 E & River Run
7:27 am	NE 6th St & NE 4th Ave

27 CES PM

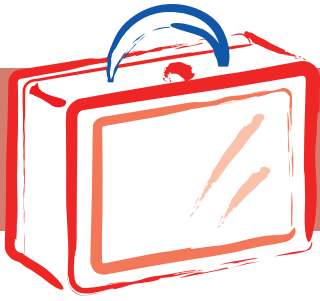
TIME	LOCATION
3:00 pm	SE 16th Ave & SE 6th Ln
3:02 pm	SE 14th Ave & SE 8th St
3:04 pm	SE 13th Ave & SE 4th St
3:10 pm	NE 14th Ave & NE 10th St
3:15 pm	70 E & River Run
3:18 pm	NE 6th St & NE 4th Ave

53 CES AM

TIME	LOCATION
7:13 am	NW 32nd Ave & NW 1st St
7:14 am	NW 32nd Ave & NW 3rd St
7:16 am	NW 4th St & NW 34th Ter
7:17 am	NW 36th Ter & NW 6th St
7:27 am	SW 16th St & SW 19th Ter
7:31 am	SW 10th Dr & SW 14th St
7:36 am	SW 14th St & SW 7th Ave
7:38 am	SW 3rd Ave & SW 13th St

53 CES PM

TIME	LOCATION
3:05 pm	SW 3rd Ave & SW 13th St
3:07 pm	SW 14th St & SW 7th Ave
3:09 pm	SW 10th Dr & SW 14th St
3:13 pm	SW 16th St & SW 19th Ter
3:22 pm	NW 32nd Ave & NW 1st St
3:23 pm	NW 32nd Ave & NW 3rd St
3:25 pm	NW 4th St & NW 34th Ter
3:28 pm	NW 36th Ter & NW 6th St



Everglades Elementary, where it's great to 'B' a Gator!

Welcome to Everglades Elementary, home of the Gators!

We are excited for the start of the 2022-2023 school year. Our faculty and staff have worked tirelessly to prepare for the return of our students. This school year brings many changes, and Everglades is ready to embrace each change and continue on the path of excellence. New state testing, B.E.S.T. Standards in grades K - 5, an updated curriculum, and new administrators are just a few of the welcome additions to EES.

Everglades has a tradition of excellence and our goal and priority are to continue improving and leading the District. I am pleased to announce that Everglades is once again a B school. Students, teachers, and staff worked to earn a B for the 2021-2022 school year, and parents are a huge contributing factor in this score.

Parents, you earned this recognition with us and for that we applaud you! Thank you to all of our stakeholders for your continued support and partnership. We could not be the successful school that we are today without you.

As we prepare to embark on another school year, I would like to welcome our new team of administrators. I, Mrs. Christina Norman, am your principal. I once walked these same halls as a student at Everglades and am a proud Okeechobee High School graduate. Before joining this fantastic school, I taught third and fourth grade in Okeechobee and was most recently an Assistant Principal at Okeechobee High School. Joining me is our Assistant Principal, Mrs. RaeAnn Whiteside. Mrs. Whiteside has a long history in Okeechobee County Schools, having taught for over twenty years. She is also a graduate of Okeechobee High School and is excited to continue serving our community.

For all the changes that come with this year, we will also continue some EES traditions. Kidz First, Inc is again partnering with us to provide each student with a backpack full of supplies. These will be distributed at Open House on Monday, August 8 from 5 p.m. - 7 p.m. We will continue to be a PBIS school, recognizing and rewarding positive behavior from our students, and earned a Bronze status for the 2021-2022 school year. Our students will also continue to have the opportunity to learn about agriculture in Florida during specials time.

I want to encourage each of you to become involved in your child's education and school. Everglades has many opportunities available to parents and we will showcase these at Open House and provide you with the opportunity to join a school committee. These opportunities include PTO, SAC, and Parent and Family Engagement. We welcome our parents' input and ideas.

2022 - 2023 is going to be another year of excellence at Everglades Elementary. We will continue to provide high-quality instruction to every student and look for ways to grow as educators and a school. I cannot wait to see you all on August 10. It's great to "B" a Gator.



Christina Norman
Principal,
Everglades Elementary School





EVERGLADES ELEMENTARY

BUS SCHEDULE

01 EESAM

TIME	LOCATION
7:24 am	NE 30th Ave & NE 7th Ln
7:25 am	NE 8th St & NE 31st Ter
7:26 am	NE 30th Ave & NE 11th Ln
7:27 am	NE 28th Ave & Box 1073

01 EESPM

TIME	LOCATION
3:25 pm	NE 30th Ave & NE 7th Ln
3:26 pm	NE 8th St & NE 31st Ter
3:28 pm	NE 30th Ave & NE 11th Ln
3:29 pm	NE 28th Ave & Box 1073

07 EESAM

TIME	LOCATION
7:05 am	NE 62nd Ave & NE 4th St
7:07 am	NE 62nd Ave & NE 7th St
7:08 am	NE 62nd Ave & Box 895
7:10 am	NE 64th Ave & NE 7th St
7:12 am	NE 64th Ave & NE 4th St
7:13 am	NE 64th Ave & NE 2nd St
7:17 am	SE 68th Ave & Box 181
7:21 am	NE 1st St & Box 6668
7:22 am	NE 1st St & NE 70th Ave
7:24 am	NE 70th Ave & NE 4th St
7:26 am	NE 70th Ave & NE 7th St

07 EESPM

TIME	LOCATION
3:16 pm	NE 62nd Ave & NE 4th St
3:18 pm	NE 62nd Ave & NE 7th St
3:19 pm	NE 62nd Ave & Box 895
3:21 pm	NE 64th Ave & NE 7th St
3:23 pm	NE 64th Ave & NE 4th St
3:24 pm	NE 64th Ave & NE 2nd St
3:28 pm	SE 68th Ave & Box 181
3:32 pm	NE 1st St & Box 6668
3:33 pm	NE 1st St & NE 70th Ave
3:35 pm	NE 70th Ave & NE 4th St
3:37 pm	NE 70th Ave & NE 7th St

16 EESAM

TIME	LOCATION
7:16 am	NE 8th St & NE 29th Ave
7:22 am	70 E & NE 24th Ave
7:25 am	NE 16th Ave & NE 8th St
7:26 am	NE 16th Ave & NE 14th St

16 EESPM

TIME	LOCATION
3:19 pm	NE 8th St & NE 29th Ave
3:23 pm	70 E & NE 24th Ave
3:28 pm	NE 16th Ave & NE 8th St
3:30 pm	NE 16th Ave & NE 14th St

17 EESAM

TIME	LOCATION
7:25 am	14151 441 SE
7:27 am	441 SE & Box 12963
7:28 am	441 SE & Box 12710
7:30 am	441 SE & SE 118th Ter
7:31 am	441 SE & Box 11486
7:34 am	441 SE & 99th Trl
7:36 am	441 SE & SE 88th Blvd
7:37 am	SE 86th Blvd & Box 8571
7:38 am	441 SE & Box 8190
7:39 am	441 SE & Box 7777
7:40 am	441 SE & Box 6500

17 EESPM

TIME	LOCATION
3:17 pm	441 SE & Box 6500
3:18 pm	441 SE & Box 7777
3:22 pm	441 SE & Box 8190
3:23 pm	441 SE & Oak Park Rentals
3:25 pm	441 SE & SE 88th Blvd
3:27 pm	441 SE & 99th Trl
3:30 pm	441 SE & Box 11486
3:31 pm	441 SE & SE 118th Ter
3:33 pm	441 SE & Box 12710
3:35 pm	441 SE & Box 12963
3:38 pm	14151 441 SE



Show off those cuties!

As area children return to class, we are inviting area families to memorialize the occasion and share those

“Back to School” photos with their community newspaper and online photo gallery.

Submit your photos at SouthCentralFloridaLife.com/backtoschool



EVERGLADES ELEMENTARY

BUS SCHEDULE

25.1 EES AM

<u>TIME</u>	<u>LOCATION</u>
7:05 am	441 SE & SE 33rd Ter
7:09 am	441 SE & 42nd PL
7:15 am	441 SE & Treasure Island Motel
7:17 am	SE 34th Ave & Box 3337
7:18 am	SE 28th St & SE 36th Ave
7:21 am	SE 28th St & SE 47th Ter
7:24 am	SE 43rd Ave & SE 27th St

25.1 EES PM

<u>TIME</u>	<u>LOCATION</u>
3:26 pm	SE 43rd Ave & SE 27th St
3:28 pm	SE 28th St & SE 47th Ter
3:32 pm	SE 28th St & SE 36th Ave
3:33 pm	SE 34th Ave & Box 3337
3:39 pm	441 SE & 42nd PL
3:44 pm	441 SE & Treasure Island Motel
3:46 pm	441 SE & SE 33rd Ter

25.2 EES AM

<u>TIME</u>	<u>LOCATION</u>
7:45 am	SE 26th St & Box 4046
7:46 am	SE 34th Dr & SE 20th Ct
7:47 am	SE 34th Dr & SE 23rd St
7:53 am	SE 40th Ave & SE 22nd Ct

25.2 EES PM

<u>TIME</u>	<u>LOCATION</u>
3:00 pm	SE 40th Ave & SE 22nd Ct
3:04 pm	SE 34th Dr & SE 23rd St
3:05 pm	SE 34th Dr & SE 20th Ct
3:08 pm	SE 26th St & Box 4046

28 EES AM

<u>TIME</u>	<u>LOCATION</u>
7:14 am	441 SE & Box 4519
7:16 am	441 SE & Box 5350
7:17 am	441 SE & Box 5670
7:19 am	441 SE & Box 6258
7:21 am	441 SE & Box 6676
7:22 am	441 SE & Box 8042
7:23 am	441 SE & Box 8741
7:24 am	SE 68th Way & Box 8769
7:26 am	SE 67th Dr & SE 88th Tr
7:28 am	SE 63rd Dr & SE 87th Blvd
7:32 am	SE 86th Blvd & SE 58th Dr
7:33 am	SE 57th Dr & SE 93rd Trl
7:34 am	SE 59th Dr & SE 91st Trl
7:36 am	SE 60th Dr & Box 9338
7:39 am	SE 57th Dr & SE 89th Ter
7:42 am	SE 57th Dr & SE 81st Cir
7:43 am	SE 57th Dr & SE 80th Trl
7:45 am	SE 60th Dr & Box 8145
7:47 am	SE 59th Dr & SE 85th Ter

31 EES AM

<u>TIME</u>	<u>LOCATION</u>
7:14 am	NE 96th Ave & Box 2396
7:17 am	NE 7th St & Box 9775
7:19 am	NE 101st Ave & Box 1155
7:27 am	NE 103rd Ave & NE 28th Ln
7:28 am	NE 103rd Ave & NE 23rd Ln
7:30 am	NE 103rd Ave & NE 19th St
7:32 am	NE 103rd Ave & NE 11th Ct
7:34 am	NE 104th Ct & Box 896
7:36 am	NE 103rd Ave & NE 106th Ct

28 EES PM

<u>TIME</u>	<u>LOCATION</u>
3:08 pm	SE 60th Dr & Box 8145
3:10 pm	SE 59th Dr & SE 85th Ter
3:10 pm	SE 60th Dr & Box 8145
3:11 pm	SE 57th Dr & SE 80th Trl
3:13 pm	SE 57th Dr & SE 81st Cir
3:15 pm	SE 57th Dr & SE 89th Ter
3:16 pm	SE 60th Dr & Box 9338
3:20 pm	SE 59th Dr & SE 91st Trl
3:22 pm	SE 57th Dr & SE 93rd Trl
3:23 pm	SE 86th Blvd & SE 58th Dr
3:26 pm	SE 67th Dr & SE 88th Tr
3:29 pm	SE 63rd Dr & SE 87th Blvd
3:34 pm	SE 68th Way & Box 8769
3:37 pm	441 SE & Box 8741
3:40 pm	441 SE & Box 8042
3:41 pm	441 SE & Box 6676
3:43 pm	441 SE & Box 6258
3:45 pm	441 SE & Box 5670
3:46 pm	441 SE & Box 5350
3:48 pm	441 SE & Box 4519

31 EES PM

<u>TIME</u>	<u>LOCATION</u>
3:07 pm	NE 96th Ave & Box 2396
3:09 pm	NE 7th St & Box 9775
3:11 pm	NE 101st Ave & Box 1155
3:21 pm	NE 103rd Ave & NE 28th Ln
3:23 pm	NE 103rd Ave & NE 23rd Ln
3:25 pm	NE 103rd Ave & NE 19th St
3:28 pm	NE 103rd Ave & NE 11th Ct
3:30 pm	NE 104th Ct & Box 896
3:31 pm	NE 103rd Ave & NE 106th Ct



EVERGLADES ELEMENTARY

BUS SCHEDULE

32 EESAM

TIME	LOCATION
7:17 am	NE 64th Ave & NE 11th St
7:19 am	NE 64th Ave & NE 9th Ln
7:21 am	NE 60th Ave & NE 8th St
7:23 am	NE 60th Ave & NE 3rd Ln
7:27 am	SE 8th St & Box 6631
7:29 am	SE 80th Ave & Box 555
7:33 am	NE 80th Ave & NE 8th Dr
7:34 am	NE 82nd Ave & NE 12th Ln
7:35 am	NE 80th Ave & Box 1355
7:36 am	NE 80th Ave & NE 16th St

32 EESPM

TIME	LOCATION
3:08 pm	NE 64th Ave & NE 11th St
3:09 pm	NE 64th Ave & NE 9th Ln
3:11 pm	NE 60th Ave & NE 8th St
3:13 pm	NE 60th Ave & NE 3rd Ln
3:17 pm	SE 8th St & Box 6631
3:20 pm	SE 80th Ave & Box 555
3:23 pm	NE 80th Ave & NE 8th Dr
3:25 pm	NE 82nd Ave & NE 12th Ln
3:26 pm	NE 80th Ave & Box 1355
3:27 pm	NE 80th Ave & NE 16th St

34 EESAM

TIME	LOCATION
6:50 am	NE 112th Ave & NE 32nd St
6:54 am	70 E & Gracewood
7:01 am	NE 101st St & Box 11017
7:03 am	NE 101st St & NE 104th Ter
7:13 am	NE 128th Ave & 25th St
7:14 am	NE 128th Ave & NE 20th Ct
7:15 am	NE 128TH Ave & Box 920
7:20 am	SE 34th St & SE 132nd Ave
7:23 am	SE 134th Ave & SE 46th St
7:23 am	SE 46th St & Box 13660
7:24 am	SE 128th Ave & Box 4351
7:25 am	SE 128th Ave & SE 56th Cir
7:32 am	SE 30th Pkwy & Box 5873

34 EESPM

TIME	LOCATION
3:08 pm	SE 30th Pkwy & Box 5873
3:23 pm	SE 128th Ave & SE 56th Cir
3:26 pm	SE 128th Ave & Box 4351
3:29 pm	SE 46th St & Box 13660
3:30 pm	SE 134th Ave & SE 46th St
3:35 pm	SE 34th St & SE 132nd Ave
3:40 pm	NE 128TH Ave & Box 920
3:42 pm	NE 128th Ave & NE 20th Ct
3:43 pm	NE 128th Ave & 25th ST
3:49 pm	70 E & Gracewood
3:56 pm	NE 101st St & NE 104th Ter
3:59 pm	NE 101st St & Box 11017
4:14 pm	NE 112th Ave & NE 32nd St

42 EESPM

TIME	LOCATION
7:08 am	70 E & NE 31st Ter
7:12 am	70 E & NE 56th Ave
7:15 am	NE 70th Ave & NE 11th St
7:22 am	NE 80th Ave & NE 37th St
7:25 am	70 E & NE 71st Ave
7:27 am	70 E & NE 64th Ave
7:29 am	70 E & NE 55th Trl
7:34 am	NE 48 Ave & 16th Ct
7:39 am	NE 42nd Ter & NE 9th Ln

42 EESPM

TIME	LOCATION
3:00 pm	70 E & NE 31st Ter
3:03 pm	70 E & NE 56th Ave
3:06 pm	NE 70th Ave & NE 11th St
3:11 pm	NE 80th Ave & NE 37th St
3:16 pm	70 E & NE 71st Ave
3:17 pm	70 E & NE 64th Ave
3:19 pm	70 E & NE 55th Trl
3:24 pm	NE 48 Ave & 16th Ct
3:29 pm	NE 42nd Ter & NE 9th Ln

54 EESAM

TIME	LOCATION
ROUTE 57 PM:	
7:05 am	SE 39th Ave & SE 29th Ct
7:06 am	SE 28th St & SE 38th Ave
7:09 am	SE 26th St & Box 3606
7:10 am	SE 34th Dr & SE 25th St
7:12 am	SE 25th St & Box 3901
7:14 am	SE 40 Ave & SE 23rd Ct

57 EESAM

TIME	LOCATION
7:19 am	441 SE & SE 50th Ave (King's Bay)

57 EESPM

TIME	LOCATION
3:02 pm	SE 25th St & Box 3901
3:04 pm	SE 34th Dr & SE 25th St
3:08 pm	SE 39th Ave & SE 29th Ct
3:12 pm	SE 28th St & SE 38th Ave
3:32 pm	441 SE & SE 50th Ave (King's Bay)





North Elementary is proud to be the home of the Tigers!

Dear NES Families,

On behalf of the staff at North Elementary School, I am happy to welcome you to the 2022-2023 school year! The beginning of each school year is always exciting: students get to meet their new teachers, make new friends, and set new goals for the year. New curriculum in English Language Arts, as well as in Math across all grade levels, will most definitely add to this exciting journey and we cannot wait to explore all of our brand new materials in class!

Building lasting relationships with our families is important to us. Kindergarten families will receive a Parent Information Binder to help them keep track of resources that we share. We are active on Facebook (NESTigers), and we regularly share school information on Class DOJO – be sure to sign up for both to stay up to date with NES happenings and events! Our way of work is outlined in our Student Handbook that will be sent home with each student at the beginning of the school year. General information about our school can be found on our website at www.okee.k12.fl.us/nas. We encourage our families to check the Skyward parent contact information prior to the school start to ensure that it is correct as many important updates will be shared via allcalls and text messaging. It is also important that families have a working e-mail address listed so that they can be included as recipients of our weekly parent newsletters.

Home-school partnerships are a crucial component in students' success. Please consider joining our Parent Teacher Organization, School Advisory Committee, or attend our monthly school information sessions to strengthen our work as a team. We hold Academic Parent Teacher Team (APTT) meetings to keep families informed about instructional programs as well as students' progress in class. Your biggest help comes in the form of simply encouraging your child every step of the way and supporting their learning by ensuring that they attend school daily and arrive on time - ready for the day's learning experience. Missed instructional time will impact everyone's learning, and can over time affect attitudes towards learning and school in general.

We encourage our students to take advantage of the free breakfast and lunch program at NES. Breakfast is served starting at 7:30 AM, and classes begin promptly at 8:10 AM. To stay hydrated, students should continue to bring a bottle of water (or a refillable water bottle), but please no fountain drinks, sodas, or other drinks/cups that can easily spill. Our priority is to provide quality instruction and keep students active and engaged until they are ready to be dismissed at 2:50 PM. Each family will receive a set of two rider cards to be displayed on the windshield during pickup to ensure safe and efficient pickup procedure. Thank you for allowing us to be part of your child's education. We cannot wait to see everyone at Open House on Monday, August 8!

Sincerely,
Dr. Tuuli Robinson
Principal of North Elementary School





NORTH ELEMENTARY

BUS SCHEDULE

08 NESAM

<u>TIME</u>	<u>LOCATION</u>
6:38 am	441 N & NE 308th St
6:39 am	441 N & Box 31100
6:46 am	NW 392nd St & NW 24th Dr
6:54 am	NW 344th St & NW 29th Ave
6:56 am	NW 344th St & NW 21st Ave
7:02 am	441 N & Indian Hammock
7:08 am	NE 304th St & NE 55th Ave
7:13 am	NE 304th St & Box 5011
7:15 am	NE 301st Blvd & Box 3255
7:18 am	NE 304th St & NE 23rd Way
7:20 am	441 N & Box 30255
7:24 am	NE 300th St & N Center Ave

10 NESAM

<u>TIME</u>	<u>LOCATION</u>
7:00 am	441 N & Box 9084
7:02 am	NW 115th Dr & NW 2nd Ter
7:04 am	NE 115th Dr & NE 3rd Cir
7:08 am	NW 110th St & NW 8th Ave (SE)
7:13 am	NW 8th Ave & NW 106th St (NW)
7:18 am	NW 106th St & NW 4th Ave
7:19 am	NW 102nd St & NW 8th Ave (SE)
7:20 am	NW 8th Ave & NW 98th St
7:22 am	NW 98th St & N Center Ave
7:27 am	441 N & NW 50th Dr
7:28 am	441 N & Box 4351
7:34 am	NE 54th Trl & NE 50th Ct
7:36 am	NE 54th Trl & Box 2569
7:38 am	NE 54th Trl & NE 58th Dr
7:39 am	NE 54th Trl & NE 62 Pkwy
7:41 am	NE 39th Blvd & Box 1782
7:47 am	NW 36th St & NW 4th Ave
7:47 am	NW 36th St & NW 8th Ave

08 NES PM

<u>TIME</u>	<u>LOCATION</u>
3:25 pm	NE 300th St & N Center Ave
3:29 pm	441 N & Box 30255
3:31 pm	NE 304th St & NE 23rd Way
3:35 pm	NE 301st Blvd & Box 3255
3:40 pm	NE 304th St & Box 5011
3:42 pm	NE 304th St & NE 55th Ave
3:52 pm	441 N & Indian Hammock
3:58 pm	NW 344th St & NW 21st Ave
4:01 pm	NW 344th St & NW 29th Ave
4:12 pm	NW 392nd St & NW 24th Dr
4:19 pm	441 N & Box 31100
4:20 pm	441 N & NE 308th St

10 NES PM

<u>TIME</u>	<u>LOCATION</u>
3:07 pm	OAA - Staff students to NES
3:08 pm	NW 36th St & NW 8th Ave
3:09 pm	NW 36th St & NW 4th Ave
3:15 pm	NE 54th Trl & NE 50th Ct
3:17 pm	NE 54th Trl & Box 2569
3:18 pm	NE 54th Trl & NE 58th Dr
3:19 pm	NE 54th Trl & NE 62 Pkwy
3:21 pm	NE 39th Blvd & Box 1782
3:30 pm	441 N & Box 9084 (PM only)
3:35 pm	NW 115th Dr & NW 2nd Ter
3:37 pm	NE 115th Dr & NE 3rd Cir
3:41 pm	NW 110th St & NW 8th Ave (SE)
3:44 pm	NW 8th Ave & NW 106th St (NW)
3:46 pm	NW 106th St & NW 4th Ave
3:48 pm	NW 102nd St & NW 8th Ave (SE)
3:50 pm	NW 8th Ave & NW 98th St
3:52 pm	NW 98th St & N Center Ave
3:59 pm	441 N & Box 4351

14 NESAM

<u>TIME</u>	<u>LOCATION</u>
7:12 am	NE 168th St & Fire House
7:14 am	441 N & Mac Playground
7:16 am	441 N & MAC 3 (207)
7:16 am	441 N & MAC Radio Tower
7:18 am	441 N & MAC Church
7:29 am	NW 36th St & Box 1319
7:30 am	NW 39th Cir & Box 1408
7:31 am	NW 39th Cir & Box 938

14 NES PM

<u>TIME</u>	<u>LOCATION</u>
3:08 pm	NW 36th St & Box 1319
3:10 pm	NW 39th Cir & Box 1408
3:12 pm	NW 39th Cir & Box 938
3:30 pm	NE 168th St & Fire House
3:36 pm	441 N & Mac Playground
3:39 pm	441 N & MAC 3
3:41 pm	441 N & MAC Radio Tower
3:45 pm	441 N & MAC Church

21 NESAM

<u>TIME</u>	<u>LOCATION</u>
7:06 am	NW 160th St & Box 3631
7:07 am	NW 160th St & Box 5065
7:10 am	NW 160th St & Box 4900
7:13 am	NW 38th Ave & NW 163rd Ct
7:20 am	NW 32nd Ave & NW 175th Ct
7:21 am	NW 32nd Ave & NW 172nd Ct
7:26 am	NE 160th St & NE 1st Way
7:32 am	441 N & Villa Margaret
7:36 am	NW 30th Ln & NW 8th Ter



NORTH ELEMENTARY

BUS SCHEDULE

21 NESPM

<u>TIME</u>	<u>LOCATION</u>
3:05 pm	441 N & Villa Margaret
3:13 pm	NW 160th St & Box 3631
3:16 pm	NW 160th St & Box 5065
3:17 pm	NW 160th St & Box 4900
3:20 pm	NW 38th Ave & NW 163rd Ct
3:26 pm	NW 32nd Ave & NW 175th Ct
3:27 pm	NW 32nd Ave & NW 172nd Ct
03:36 pm	NE 160th St & NE 1st Way
03:50 pm	NW 30th Ln & NW 8th Ter

24 NESAM

<u>TIME</u>	<u>LOCATION</u>
7:15 am	441 N & NE 11th St
7:19 am	NW 21st Ln & NW 5th Ave
7:20 am	NW 17th St & NW 5th Ave
7:20 am	NW 15th St & Box 509
7:21 am	NW 7th Ave & Box 1712
7:23 am	NW 9th Ave & NW 11th St
7:25 am	NW 10th St & NW 3rd Ave

24 NESPM

<u>TIME</u>	<u>LOCATION</u>
3:08 pm	NW 21st Ln & NW 5th Ave
3:09 pm	NW 17th St & NW 5th Ave
3:10 pm	NW 15t St & Box 509
3:11 pm	NW 7th Ave & Box 1712
3:14 pm	NW 9th Ave & NW 11th St
3:17 pm	NW 10th St & NW 3rd Ave
3:35 pm	441 N & NE 11th St

39 NESAM

<u>TIME</u>	<u>LOCATION</u>
7:11 am	441 N & NE 120th St
7:12 am	441 N & Box 12600
7:16 am	NE 144th St & Box 2050
7:22 am	NE 120th St & Box 7500
7:24 am	NE 120th St & NE 84th Ave
7:25 am	NE 120th St & Box 10200
7:31 am	NE 56th Ave & Box 12712
7:32 am	NE 56th Ave & Box 12950
7:35 am	NE 138th St & Box 1900
7:37 am	NE 26th Ave & NE 131st Ln
7:39 am	NE 131st Ln & NE 22nd Ave
7:40 am	NE 131st Ln & NE 18th Ave
7:51 am	NW 36th St & NW 10th Ave
7:52 am	NW 12th Ave & NW 35th Ln

39 NESPM

<u>TIME</u>	<u>LOCATION</u>
2:58 pm	NW 12th Ave & NW 35th Ln
2:59 pm	NW 36th St & NW 10th Ave
3:06 pm	441 N & NE 120th St
3:07 pm	441 N & Box 12600
3:08 pm	NE 131st Ln & NE 18th Ave
3:09 pm	NE 131st Ln & NE 22nd Ave
3:10 pm	NE 26th Ave & NE 131st Ln
3:13 pm	NE 138th St & Box 1900
3:15 pm	NE 144th St & Box 2050
3:20 pm	NE 56th Ave & Box 12950
3:21 pm	NE 56th Ave & Box 12712
3:24 pm	NE 120th St & Box 7500
3:26 pm	NE 120th St & NE 84th Ave
3:29 pm	NE 120th St & Box 10200

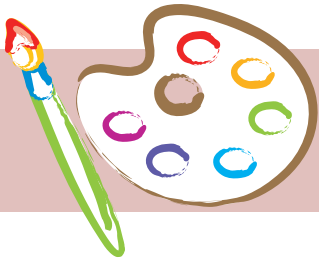
55 NESAM

<u>TIME</u>	<u>LOCATION</u>
6:32 am	NE 224th St & LARSON 3
6:33 am	NE 48th Ave & Box 23721
6:36 am	NE 48TH AVE & Box 22800
6:39 am	NE 48th Ave & NE 272nd St
6:40 am	NE 48th Ave & Box 28630
6:48 am	NE 9th Ave & End of Road
6:53 am	NW 364th Rd & Box 864
6:55 am	NW 366th Trl & Box 476
6:57 am	NE 342nd Trl & NE 361st Ct
6:59 am	NE 342nd Trl & NE 356th Ct
7:01 am	NE 342nd Trl & NE 4th Dr
7:02 am	NW 352nd Ct & NW 4th Dr
7:03 am	NW 358th Blvd & NW 4th Dr
7:15 am	MAC 3 (207)

55 NESPM

<u>TIME</u>	<u>LOCATION</u>
3:36 pm	NE 224th St & LARSON 3
3:38 pm	NE 48th Ave & Box 23721
3:40 pm	NE 48TH AVE & Box 22800
3:44 pm	NE 48th Ave & NE 272nd St
3:54 pm	NE 9th Ave & End of Road
4:01 pm	NW 358th Blvd & NW 4th Dr
4:04 pm	NW 352nd Ct & NW 4th Dr
4:06 pm	NE 342nd Trl & NE 4th Dr
4:09 pm	NE 342nd Trl & NE 356th Ct
4:11 pm	NE 342nd Trl & NE 361st Ct
4:16 pm	NW 366th Trl & Box 476
4:18 pm	NW 364th Rd & Box 864





Seminole Elementary nurtures and supports every child

Greetings Seminole Elementary Family!

With great excitement, I welcome returning and new students and families to the 2022-2023 school year! At Seminole Elementary, faculty and staff are dedicated to providing ALL students with excellence in their academic, social, physical, and emotional development in a safe, student-centered community. We are determined to nurture and support every child every day to ensure their success and promote a love for learning.

Important reminders:

School Hours: Students will return to school on Wednesday, August 10, 2022. Our new school hours are **8:10 am to 2:50 pm**. It is so important to have your student here on time and attending every day. Research shows that students who miss less school have a higher potential for success than students who are absent or miss part of the day. Let's strive for success!

Parent Drop Off/Pick Up and Traffic Pattern: Students can be dropped off as early as 7:40 am and will be dismissed promptly at 2:50pm. Parents, please **use the roundabout** towards the back of the school when dropping off or picking up your student. This helps us avoid congestion and issues with traffic backup. We have cones set up directly in front of the school, blocking direct entry and reminding you to drive to the roundabout. Please do not use the driveway before the roundabout to turn around. This creates a hazardous situation for cars that are driving to the roundabout. While in the drop-off or pick-up line, we ask that you remain in your vehicle and refrain from parking and walking to the building to drop off/pick up your child(ren). Students should only exit and enter their car on the passenger side.

Transportation/Buses: Please send a note on the first day of school to let the teacher know if your child is parent pick-up OR a bus rider. If your child rides the bus, communicate your child's bus number AND your home address and contact information.

School Breakfast and Lunch: School breakfast and lunches will be served starting the first day of school. Breakfast and lunch are free of charge to all students regardless of eligibility.

Student Agendas/Communication Folders: All students in 3rd – 5th grades will be provided with an academic agenda. Students in K - 2nd grade will be given a communication folder. All students will have a daily reading assignment. Please listen to your student read aloud and sign their fluency form.

Parent Communication: All parents are encouraged to create a parent Skyward account to receive grade updates and assignment information. Additionally, update your cell phone and email address with our office staff to receive information via our school messaging system. Connect to Facebook @SeminoleElementaryofOkee and get on Classroom DoJo (request access from your child's teacher) to view snapshots of our students engaged in learning and to be informed of current activities and events happening on campus.

Parent/Guardian Involvement: I encourage you to become active members of our Student Advisory Council (SAC) and our Parent Teacher Organization (PTO). During Open House and at other meetings during the year, you will have the opportunity to learn more about and join these organizations. Volunteering and participating in these organizations give you the opportunity to provide input regarding school budget, school improvement initiatives, fundraisers, school activities, and school incentives. I am very excited to partner with stakeholders and look forward to building strong working relationships with parents and community members. Our work together strengthens our school!

Please join us on Monday, August 8th, from 5:00 pm to 7:00 pm for Open House. You will meet your child's teacher and receive information about how you can best support your child this year. I am excited about what we will accomplish this year and look forward to creating learning environments where all students excel! My door is always open, and I welcome your input and feedback. Please do not hesitate to contact me with questions or concerns. Welcome back, Seminole family!

Dr. Robyn Ziolkowski
Principal,
Seminole Elementary School





SEMINOLE ELEMENTARY

BUS SCHEDULE

12 SEMAM

<u>TIME</u>	<u>LOCATION</u>
6:38 am	Brinkerhoff Ln & Kelton Ter
6:39 am	Broadland Ln & Jordan Ter
6:45 am	SW Rucks Dairy Rd & Box 2527
6:55 am	NW 128th Ave & NW 20th St
6:58 am	NW 128th Ave & Box 3038
7:15 am	NW 56th St & NW 154th Ave
7:35 am	NW 10th Ave & NW 10th St
7:42 am	NW 18th St & NW 36th Ter
7:43 am	NW 18th St & NW 38th Ave
7:45 am	NW 18th St & NW 42nd Ave
7:46 am	NW 18th St & 50' before NW 46th Ave

12 SEMPM

<u>TIME</u>	<u>LOCATION</u>
2:58 pm	NW 18th St & NW 42nd Ave
2:59 pm	NW 18th St & 50' before NW 46th Ave
3:01 pm	NW 18th St & NW 38th Ave
3:02 pm	NW 18th St & NW 36th Ter
3:07 pm	NW 10th Ave & NW 10th St
3:27 pm	NW 128th Ave & Box 3038
3:28 pm	NW 128th Ave & NW 20th St
3:32 pm	NW 56th St & NW 154th Ave
3:45 pm	Broadland Ln & Jordan Ter
3:47 pm	Brinkerhoff Ln & Kelton Ter
3:55 pm	SW Rucks Dairy Rd & Box 2527

15 SEMAM

<u>TIME</u>	<u>LOCATION</u>
7:13 am	NW 36th St & NW 23rd Ave
7:18 am	NW 24th St & NW 53rd Ter
7:21 am	NW 24th St & NW 63rd Ter
7:23 am	NW 50th Ave & NW 27th St
7:24 am	NW 30th St & Box 5277
7:26 am	NW 30th St & Box 6255
7:28 am	NW 30th St & NW 74th Ter
7:29 am	NW 30th St & Box 6640
7:32 am	NW 30th St & NW 47th Ave

15 SEMPM

<u>TIME</u>	<u>LOCATION</u>
3:02 pm	NW 24th St & NW 53rd Ter
3:05 pm	NW 24th St & NW 63rd Ter
3:08 pm	NW 50th Ave & NW 27th St
3:10 pm	NW 30th St & Box 5277
3:12 pm	NW 30th St & Box 6255
3:15 pm	NW 30th St & NW 74th Ter
3:17 pm	NW 30th St & Box 6640
3:20 pm	NW 30th St & NW 47th Ave
3:27 pm	NW 36th St & NW 23rd Ave

40.1 SEMAM

<u>TIME</u>	<u>LOCATION</u>
7:44 am	NW 24th Ln & NW 34th Ave
7:45 am	NW 35th Dr & NW 37th Ave
7:46 am	NW 36th St & NW 38th Ave

40.1 SEMPM

<u>TIME</u>	<u>LOCATION</u>
3:24 pm	NW 36th St & NW 38th Ave
3:26 pm	NW 35th Dr & NW 37th Ave
3:28 pm	NW 24th Ln & NW 34th Ave

22 SEMAM

<u>TIME</u>	<u>LOCATION</u>
5:56 am	NW 144th Ave & NW 288th St
6:00 am	NW 144th Ave & NW 272nd St
6:04 am	NW 144th Ave & NW 256th St
6:32 am	NW 144th Ave & NW 248th St
6:33 am	16030 NW 144th Ave & 100' before 240th St
7:00 am	NW 160th Dr & NW 214th Cir
7:18 am	NW 80th Ave & NW 82nd Ct
7:20 am	NW 80th Ave & NW 86th Ct
7:22 am	NW 80th Ave & NW 92nd Ct
7:24 am	NW 80th Ave & NW 96th Ct
7:30 am	98 N & NW 67th Ln

22 SEMPM

<u>TIME</u>	<u>LOCATION</u>
3:28 pm	98 N & NW 67th Ln
3:34 pm	NW 80th Ave & NW 96th Ct
3:36 pm	NW 80th Ave & NW 92nd Ct
3:38 pm	NW 80th Ave & NW 86th Ct
3:40 pm	NW 80th Ave & NW 82nd Ct
3:58 pm	NW 160th Dr & NW 214th Cir
4:25 pm	16030 NW 144th Ave & 100' before 240th St
4:27 pm	NW 144th Ave & NW 248th St
4:29 pm	NW 144th Ave & NW 256th St
4:33 pm	NW 144th Ave & NW 272nd St
4:37 pm	NW 144th Ave & NW 288th St

40.2 SEMAM

<u>TIME</u>	<u>LOCATION</u>
3:00 pm	NW 46th Ave & Villas

40.2 SEMAM

<u>TIME</u>	<u>LOCATION</u>
7:51 am	NW 46th Ave & Villas



SEMINOLE ELEMENTARY

BUS SCHEDULE

50 SEM AM

<u>TIME</u>	<u>LOCATION</u>
6:38 am	NW 192nd Ave & NW 302nd St
6:40 am	NW 192nd Ave & NW 288th St
6:41 am	NW 192nd Ave & NW 280th St
6:44 am	NW 192nd Ave & NW 264th St
6:46 am	NW 192nd Ave & NW 256th St
6:51 am	NW 176th Ave & Box 22150
6:54 am	NW 176th Ave & NW 203rd St
6:56 am	NW 176th Ave & NW 190th Rd
7:05 am	NW 160th St & Box 12409
7:17 am	NW 189th Ave & Box 8651
7:18 am	NW 189th Ave & NW 83rd Trl
7:23 am	NW 144th Trl & Box 12900
7:27 am	98 N & Box 12507
7:30 am	98 N & NW 120th St
7:36 am	98 N & 4830

50 SEM PM

<u>TIME</u>	<u>LOCATION</u>
3:19 pm	98 N & 4830 (Ranch)
3:25 pm	98 N & NW 120th St
3:28 pm	98 N & Box 12507
3:32 pm	NW 144th Trl & Box 12900
3:38 pm	NW 189th Ave & NW 83rd Trl
3:50 pm	NW 160th St & Box 12409
4:00 pm	NW 176th Ave & NW 190th Rd
4:02 pm	NW 176th Ave & NW 203rd St
4:05 pm	NW 176th Ave & Box 22150
4:10 pm	NW 192nd Ave & NW 256th St
4:12 pm	NW 192nd Ave & NW 264th St
4:15 pm	NW 192nd Ave & NW 280th St
4:16 pm	NW 192nd Ave & NW 288th St
4:18 pm	NW 192nd Ave & NW 302nd St

School Lunch

Info

On July 6, 2022, Okeechobee County School Board announced a continuation of the Community Eligibility Provision for the 2022-2023 school year for its National School Lunch and School Breakfast Programs. All students will be served all meals at no charge at all schools.

In accordance with Federal civil rights law and U.S. Department of Agriculture (USDA) civil rights regulations and policies, the USDA, its Agencies, offices, and employees, and institutions participating in or administering USDA programs are prohibited from discriminating based on race, color, national origin, sex, disability, age, or reprisal or retaliation for prior civil rights activity in any program or activity conducted or funded by USDA.

Persons with disabilities who require alternative means of communication for program information (e.g., Braille, large print, audiotape, American Sign Language, etc.), should contact the Agency (State or local) where they applied for benefits. Individuals who are deaf, hard of hearing or have speech disabilities may contact USDA through the Federal Relay Service at (800) 877-8339. Additionally, program information may be made available in languages other than English.

To file a program complaint of discrimination, complete the USDA Program Discrimination Complaint Form, (AD-3027) found online at: How to File a Complaint, and at any USDA office, or write a letter addressed to USDA and provide in the letter all of the information requested in the form. To request a copy of the complaint form, call (866) 632-9992. Submit your completed form or letter to USDA by:

1. **Mail:**
U.S. Department of Agriculture
Office of the Assistant Secretary
for Civil Rights
1400 Independence Ave., SW
Washington, D.C. 20250-9410;

2. **Fax:** (202) 690-7442; or

3. **Email:**
program.intake@usda.gov.

If you have any questions, please contact Lisa R. Belle, Food Service Supervisor, at 863-462-5148 x 1214





South Elementary School is ready to *SOAR!*

Welcome back to all of our students and families!

I hope that everyone had a safe and happy summer break. Over the last two months, we have been preparing for your return and are looking forward to another fantastic year! Along with those programs that have a proven record of success, we have some new initiatives that we will be implementing this year.

While we have been busy working, we hope you have been busy reading! This year, we will focus on encouraging a love of literature. You will see evidence of this all around our campus! We will be holding reading-centered activities throughout the year and will be continually recognizing (and rewarding) those students who demonstrate their love of reading. It is so important that students love this activity, so be sure to use the rest of your summer break to do just that! Enjoy a good book and get ready to share when you come back to school! In fact, you may be able to write about the things that you've learned and display these during our quarterly Writing Display Days this school year.

We are also excited about beginning our work with the Academic Parent Teacher Teams (APTT) program at South this year, as well. We know that both parents and teachers value the opportunity to meet and discuss children's progress during the school year. It is wonderful to have the chance to hold these meaningful conversations, and we are grateful that we will have the opportunity to do so. Parents will receive more information about this program, such as meeting dates, a little later in the fall after school begins.

Other programs that South Elementary will offer this year include Freckle Reading and Math, Reflex Math, and Accelerated Reader. Each of these programs is designed to improve students' abilities across academic areas. Another thing these programs have in common is that they encourage learning by making it fun. This is important because that is also what South's approach will be this year. We will be working hard to learn a lot, but will be having a great time while doing so!

Regardless of the program or activity, South Elementary School is committed to ensuring that all students grow both as learners and as people, and we will be offering programs and events to support that mission. At South, we are Putting Students First, each and every day!

We cannot wait to see everyone at Open House, which will be held from 5:00 PM until 7:00 PM on Monday, August 8th! Until then, please enjoy a safe and happy rest of your summer – and keep reading!



Sincerely,
Lonnie Steiert
Principal, South Elementary School





SOUTH ELEMENTARY

BUS SCHEDULE

18 SESAM

<u>TIME</u>	<u>LOCATION</u>
7:00 am	SW 67th Dr & Box 1767
7:02 am	SW 21st Pkwy & SW 69th Ter
7:11 am	SW 85th Way & SW 10th Ln
7:13 am	SW 86th Ave & SW 14th Ln
7:14 am	SW 14th Ln & SW 83rd Ave
7:18 am	SW 87th Ter & SW 5th Ln
7:20 am	SW 85th Ave & Box 300
7:24 am	SW 77th Ter & Box 569
7:29 am	SW 72nd Ter & Box 684
7:37 am	NW 38th Ter & NW 1st St
7:38 am	NW 1st St & Box 3465
7:44 am	SW 24th Ave & SW 3rd Ct
7:46 am	SW 24th Ave & SW 19th Ln
7:48 am	SW 24th Ave & Box 2654

18 SESPM

<u>TIME</u>	<u>LOCATION</u>
3:05 pm	SW 24th Ave & Box 2654
3:09 pm	SW 24th Ave & SW 19th Ln
3:12 pm	SW 24th Ave & SW 3rd Ct
3:15 pm	NW 1st St & Box 3465
3:16 pm	NW 38th Ter & NW 1st St
3:24 pm	SW 67th Dr & Box 1767
3:26 pm	SW 21st Pkwy & SW 69th Ter
3:35 pm	SW 85th Way & SW 10th Ln
3:37 pm	SW 86th Ave & SW 14th Ln
3:38 pm	SW 14th Ln & SW 83rd Ave
3:42 pm	SW 87th Ter & SW 5th Ln
3:44 pm	SW 85th Ave & Box 300
3:47 pm	SW 77th Ter & Box 569
3:52 pm	SW 72nd Ter & Box 684

19 SESAM

<u>TIME</u>	<u>LOCATION</u>
7:15 am	SW 53rd St & Box 1952
7:20 am	78 W & Box 7655
7:24 am	BHR Community Center
7:29 am	78 W & Box 9430
7:33 am	SW 39th Ln & SW 13th Terr
7:35 am	SW 16TH AVE & Box 3806
7:40 am	SW 28th St & Oak Lake Apts
7:45 am	SW 2nd Ave & Box 2404
7:46 am	SW 2nd Ave & Box 2202

19 SESPM

<u>TIME</u>	<u>LOCATION</u>
3:15 pm	SW 2nd Ave & Box 2202
3:16 pm	SW 2nd Ave & Box 2404
3:23 pm	SW 28th St & Oak Lake Apts
3:28 pm	SW 16TH AVE & Box 3806
3:30 pm	SW 39th Ln & SW 13th Terr
3:36 pm	SW 53rd St & Box 1952
3:42 pm	78 W & Box 9430
3:46 pm	BHR Community Center
3:53 pm	78 W & Box 7655



22 SESAM

<u>TIME</u>	<u>LOCATION</u>
5:56 am	NW 144th Ave & NW 288th St
6:00 am	NW 144th Ave & NW 272nd St
6:04 am	NW 144th Ave & NW 256th St
6:32 am	NW 144th Ave & NW 248th St
6:33 am	16030 NW 144th Ave & 100' before 240th St
7:00 am	NW 160th Dr & NW 214th Cir
7:18 am	NW 80th Ave & NW 82nd Ct
7:20 am	NW 80th Ave & NW 86th Ct
7:22 am	NW 80th Ave & NW 92nd Ct
7:24 am	NW 80th Ave & NW 96th Ct
7:30 am	98 N & NW 67th Ln

22 SESPM

<u>TIME</u>	<u>LOCATION</u>
3:28 pm	98 N & NW 67th Ln
3:34 pm	NW 80th Ave & NW 96th Ct
3:36 pm	NW 80th Ave & NW 92nd Ct
3:38 pm	NW 80th Ave & NW 86th Ct
3:40 pm	NW 80th Ave & NW 82nd Ct
3:58 pm	NW 160th Dr & NW 214th Cir
4:25 pm	16030 NW 144th Ave & 100' before 240th St
4:27 pm	NW 144th Ave & NW 248th St
4:29 pm	NW 144th Ave & NW 256th St
4:33 pm	NW 144th Ave & NW 272nd St
4:37 pm	NW 144th Ave & NW 288th St



SOUTH ELEMENTARY

BUS SCHEDULE

20 SESAM

<u>TIME</u>	<u>LOCATION</u>
7:16 am	NW 36th Ter & NW 7th St
7:18 am	NW 36th Ter & NW 5th St
7:20 am	NW 38th Ter & NW 4th St
7:30 am	SW 16th St & SW 40th Dr
7:32 am	SW 34th Ter & Box 1602
7:34 am	SW 34th Ter & SW 19th St
7:36 am	SW 34th Ter & SW 22nd St
7:38 am	SW 37th Ave & SW 20th St
7:41 am	SW 16th St & SW 28th Ave
7:44 am	SW 24th Ave & SW 24th Ln

35 SESAM

<u>TIME</u>	<u>LOCATION</u>
7:24 am	441 SE & Box 246
7:26 am	441 SE & SE 27th Ct
7:31 am	SE 18th Ter & Box 3802
7:32 am	SE 18th Ter & SE 35th Ln
7:33 am	SE 18th Ter & SE 31st St
7:34 am	SE 18th Ter & SE 29th St
7:35 am	SE 24th Blvd & Box 1911
7:38 am	SE 24th Blvd & Box 2510
7:39 am	SE 25th Dr & Box 2680
7:40 am	SE 27th St & Box 2109
7:41 am	441 SE & SE 14th Ter
7:42 am	441 SE & Box 833
7:45 am	441 S & Town Center Apt

36 SESAM

<u>TIME</u>	<u>LOCATION</u>
7:19 am	NE 14th Ave & NE 6th St
7:21 am	NE 3rd St & Box 1761
7:31 am	SW 18th Ave & SW 2nd Way
7:37 am	SW 24th Ave & SW 8th St
7:41 am	SW 15th St & Box 909

36 SESAM

<u>TIME</u>	<u>LOCATION</u>
7:19 am	NE 14th Ave & NE 6th St
7:21 am	NE 3rd St & Box 1761
7:31 am	SW 18th Ave & SW 2nd Way
7:37 am	SW 24th Ave & SW 8th St
7:41 am	SW 15th St & Box 909

20 SESPM

<u>TIME</u>	<u>LOCATION</u>
3:12 pm	SW 24th Ave & SW 24th Ln
3:19 pm	NW 36th Ter & NW 7th St
3:21 pm	NW 36th Ter & NW 5th St
3:22 pm	NW 38th Ter & NW 4th St
3:29 pm	SW 16th St & SW 40th Dr
3:31 pm	SW 34th Ter & Box 1602
3:32 pm	SW 34th Ter & SW 19th St
3:34 pm	SW 34th Ter & SW 22nd St
3:35 pm	SW 37th Ave & SW 20th St
3:38 pm	SW 16th St & SW 28th Ave

35 SESPM

<u>TIME</u>	<u>LOCATION</u>
3:01 pm	441 SE & Box 246
3:04 pm	441 SE & SE 27th Ct
3:06 pm	SE 18th Ter & Box 3802
3:07 pm	SE 18th Ter & SE 35th Ln
3:08 pm	SE 18th Ter & SE 31st St
3:09 pm	SE 18th Ter & SE 29th St
3:11 pm	SE 24th Blvd & Box 1911
3:12 pm	SE 24th Blvd & Box 2510
3:13 pm	SE 25th Dr & Box 2680
3:15 pm	SE 27th St & Box 2109
3:20 pm	441 SE & SE 14th Ter
3:21 pm	441 SE & Box 833
3:25 pm	441 S & Town Center Apt





Exceeding Expectations at Osceola Middle School

This is Sean Downing and I am looking forward to the start of my thirteenth year here at OMS as your principal. It is hard to believe that in just a few days, the students will once again bring life back to the campus at Osceola Middle School. We have had a great summer and our staff has worked extra-hard to make sure that we are ready for students to return. Given where we have been over the last couple of years, now is a great time for us to give thanks for one another and to appreciate this community and those who live in it! We are more committed than ever to make sure that we are here to listen to your concerns and to provide students with the absolute best education and services to ensure that ALL students can enjoy all of the benefits and realize their maximum potential. At OMS, success is ensuring we help provide a supportive and academically challenging setting that takes students in from the elementary schools and delivers them to Okeechobee Freshman Campus prepared and ready to flourish.

The faculty and staff at Osceola Middle say family a lot when interacting with our students and one another. One of our top goals for the upcoming school year is to give parents a greater voice in what we do at Osceola Middle School! With that, we would like to invite you to come to a Family Goal Setting BBQ and Sixth Grade Orientation on August 4 in the gym at 6:00 PM. We will share some of the Frequently Asked Questions for upcoming middle school parents and students, including your dress code questions (during the Florida Tax Free Holiday 7/26-8/7). As you leave, we will feed you and we hope to solicit input for goals for the coming school year. Please join us if you are able. If you are interested in additional information, please email me!

I am committed to keeping you informed of what we do on our campus. If you would like to be included in my Warrior Weekly Update email, please update your email in Skyward or personally email me at downings@okee.k12.fl.us so I may include you. If you like watching from afar and would enjoy seeing pictures of the students during the multitude of activities on the campus, please "like" us on Facebook (@Osceola.Middle.Okeechobee)! We try to get something new on the Facebook page at least once a week (sometimes more often than that). Additionally, we have school information on our website so check us out online at osceolamiddleschool.sites.thedigitalbell.com.

As the summer winds down, let me remind you that students entering seventh grade are required to show proof of vaccinations prior to issuing a schedule/admitting a student to class. If you have a question, please call the main office at (863) 462-5070. Additionally, fall sports tryouts happen right away when we return. Student athletes are not permitted to try out for a middle school sport until we have a completed physical form/athletic packet on file with Mr. Perman, Athletic Director.

Finally, here are some dates for you to put on your calendar:

Wednesday, August 10: The first day of school for students.

Thursday, September 8: Quarter 1 Progress Report Day.

Friday, September 9: Early Release Day.

Thank you for your continued support and trust in Osceola Middle School:
Exceeding Expectations!

Sean Downing
Principal
Osceola Middle School





OSCEOLA MIDDLE SCHOOL

BUS SCHEDULE

05 OMSAM

<u>TIME</u>	<u>LOCATION</u>
8:23 am	NW 36th Ter & NW 4th St
8:25 am	NW 36th Ter & NW 7th St
8:31 am	SW 24th Ave & SW 8th St
8:32 am	SW 24th Ave & Box 1069

05 OMS PM

<u>TIME</u>	<u>LOCATION</u>
3:50 pm	SW 24th Ave & Box 1069
3:52 pm	SW 24th Ave & SW 8th St
4:01 pm	NW 36th Ter & NW 4th St
4:03 pm	NW 36th Ter & NW 7th St

07 OMSAM

<u>TIME</u>	<u>LOCATION</u>
8:23 am	SE 8th Ave & SE 3rd St
8:24 am	SE 8th Ave & SE 8th St
8:25 am	SE 10th St & SE 8th Ave
8:28 am	SE 21st St & SE 9th Ave
8:30 am	SE 15th Ct & SE 9th Ave
8:31 am	SE 9th Ave & Se 12th St
8:33 am	SE 10th Ave & SE 6th St
8:34 am	SE 14th Ave & SE 8th St
8:35 am	SE 16th Ave & SE 6th Ln
8:36 am	SE 16th Ave & SE 2nd St
8:38 am	SE 13th Ave & SE 4th St
8:39 am	SE 10th Ave & J&W MHP

07 OMS PM

<u>TIME</u>	<u>LOCATION</u>
4:04 pm	SE 8th Ave & SE 3rd St
4:06 pm	SE 8th Ave & SE 8th St
4:07 pm	SE 10th St & SE 8th Ave
4:11 pm	SE 21st St & SE 9th Ave
4:13 pm	SE 15th Ct & SE 9th Ave
4:14 pm	SE 9th Ave & Se 12th St
4:16 pm	SE 10th Ave & SE 6th St
4:18 pm	SE 14th Ave & SE 8th St
4:19 pm	SE 16th Ave & SE 6th Ln
4:21 pm	SE 16th Ave & SE 2nd St
4:23 pm	SE 13th Ave & SE 4th St
4:25 pm	SE 10th Ave & J&W MHP

16 OMSAM

<u>TIME</u>	<u>LOCATION</u>
8:09 am	NE 128th Ave & NE 25th St
8:10 am	NE 128th Ave & NE 20th Ct
8:11 am	NE 128th Ave & Box 920
8:13 am	SE 128th Ave & Box 800
8:18 am	SE 34th St & SE 132nd Ave
8:20 am	SE 46th St & SE 134th Ave
8:21 am	SE 138th Ave & SE 46th St
8:23 am	SE 128th Ave & Box 4351
8:35 am	SE 6th St & SE 37th Terr
8:37 am	SE 35th Ter & SE 8th St
8:38 am	SE 8th St & SE 38th Ave

16 OMS PM

<u>TIME</u>	<u>LOCATION</u>
3:55 pm	SE 6th St & SE 37th Terr
3:57 pm	SE 8th St & SE 38th Ave
3:58 pm	SE 35th Ter & SE 8th St
4:09 pm	NE 128th Ave & NE 25th St
4:10 pm	NE 128th Ave & NE 20th Ct
4:12 pm	NE 128th Ave & Box 920
4:14 pm	SE 128th Ave & Box 800
4:18 pm	SE 34th St & SE 132nd Ave
4:23 pm	SE 46th St & SE 134th Ave
4:25 pm	SE 138th Ave & SE 46th St
4:29 pm	SE 128th Ave & Box 4351

Safety Smarts



on the bus

Follow these simple tips to get to and from school safely.

- Board the bus one at a time, and hold the handrail when entering and exiting the bus.
- Go directly to your seat, and remain seated and facing forward the entire bus ride.
- Talk quietly, so as not to distract the bus driver, and always listen to the bus driver's directions.
- Keep the bus aisles clear, and never put your head, arms or hands out of the bus windows.



OSCEOLA MIDDLE SCHOOL

BUS SCHEDULE

17 OMSAM

<u>TIME</u>	<u>LOCATION</u>
8:23 am	SE 18th Ter & SE 30th St
8:24 am	SE 29th St & Box 2302
8:26 am	SE 27th St & Box 2309
8:28 am	SE 24th Blvd & SE 25th Dr
8:29 am	SE 27th Ave & SE 25th Dr
8:33 am	SE 18th Ter & SE 34th Ln
8:34 am	SE 18th Ter & SE 38th Trl
8:35 am	441 SE & SE 14th Ter
8:36 am	441 SE & Shannon's Oaks
8:41 am	S Parrott Ave & Town Center Apts
8:42 am	S Parrot Ave & Box 1307
8:44 am	SW 2nd Ave & SW 18th St

17 OMSPM

<u>TIME</u>	<u>LOCATION</u>
4:09 pm	SE 18th Ter & SE 30th St
4:11 pm	SE 29th St & Box 2302
4:14 pm	SE 27th St & Box 2309
4:16 pm	SE 27th Ave & SE 25th Dr
4:18 pm	SE 24th Blvd & SE 25th Dr
4:22 pm	SE 18th Ter & SE 34th Ln
4:24 pm	SE 18th Ter & SE 38th Trl
4:26 pm	441 SE & SE 14th Ter
4:27 pm	441 SE & Shannon's Oaks
4:32 pm	S Parrott Ave & Town Center Apts
4:33 pm	S Parrot Ave & Box 1307
4:35 pm	SW 2nd Ave & SW 18th St

18 OMSAM

<u>TIME</u>	<u>LOCATION</u>
8:23 am	SW 67th Dr & Box 1767
8:24 am	SW 21st Pkwy & SW 69th Terr
8:28 am	SW 9th St & Box 6575
8:31 am	SW 9th St & SW 85th Way
8:33 am	SW 87th Ter & SW 5th Ln
8:34 am	SW 2nd St & Box 8552
8:36 am	70 W & SW 77th Ter
8:37 am	70 W & SE 72 Terr
8:44 am	SW 18th Ave & SW 2nd Way
8:48 am	SW 10th Ave & SW 9th St

18 OMSPM

<u>TIME</u>	<u>LOCATION</u>
4:08 pm	SW 10th Ave & SW 9th St
4:10 pm	SW 18th Ave & SW 2nd Way
4:22 pm	SW 67th Dr & Box 1767
4:24 pm	SW 21st Pkwy & SW 69th Terr
4:30 pm	SW 9th St & Box 6575
4:34 pm	SW 9th St & SW 85th Way
4:36 pm	SW 87th Ter & SW 5th Ln
4:37 pm	SW 2nd St & Box 8552
4:40 pm	70 W & SW 77th Ter
4:42 pm	70 W & SE 72 Terr

19 OMSAM

<u>TIME</u>	<u>LOCATION</u>
8:04 am	78 W & Box 7655
8:12 am	BHR Community Center
8:23 am	SW 53rd St & End of Road
8:28 am	SW 39th Ln & SW 13th Ter
8:36 am	SW 19th St & SW 5th Dr
8:38 am	SW 3rd Ave & SW 13th St
8:39 am	SW 3rd Ave & SW 10th St

19 OMSPM

<u>TIME</u>	<u>LOCATION</u>
4:09 pm	SW 3rd Ave & SW 10th St
4:10 pm	SW 3rd Ave & SW 13th St
4:12 pm	SW 19th St & SW 5th Dr
4:20 pm	SW 39th Ln & SW 13th Ter
4:25 pm	SW 53rd St & End of Road
4:37 pm	BHR Community Center
4:45 pm	78 W & Box 7655

20 OMSAM

<u>TIME</u>	<u>LOCATION</u>
8:20 am	SW 15th St & SW 10th Ave
8:22 am	SW 16th St & SW 19th Ter
8:23 am	SW 16th St & SW 22nd Ter
8:25 am	SW 16th St & SW 28th Ave
8:29 am	SW 16th St & SW 40th Dr
8:31 am	SW 34th Ter & SW 17th St
8:33 am	SW 34th Ter & SW 22nd St
8:36 am	SW 24th Ave & Box 2473
8:37 am	SW 24th Ave & Box 2654
8:39 am	SW 24th Ave & SW 33rd Cir
8:43 am	SW 28th St & Oak Lake Villas

20 OMSPM

<u>TIME</u>	<u>LOCATION</u>
3:57 pm	SW 15th St & SW 10th Ave
3:59 pm	SW 16th St & SW 19th Ter
4:03 pm	SW 16th St & SW 22nd Ter
4:05 pm	SW 16th St & SW 28th Ave
4:10 pm	SW 34th Ter & SW 17th St
4:12 pm	SW 34th Ter & SW 22nd St
4:14 pm	SW 16th St & SW 40th Dr
4:20 pm	SW 24th Ave & Box 2473
4:21 pm	SW 24th Ave & Box 2654
4:23 pm	SW 24th Ave & SW 33rd Cir
4:25 pm	SW 28th St & Oak Lake Villas



OSCEOLA MIDDLE SCHOOL

BUS SCHEDULE

25 OMSAM

<u>TIME</u>	<u>LOCATION</u>
8:18 am	SE 34th Dr & SE 25th St
8:20 am	SE 26th St & Box 4033
8:22 am	SE 43rd Ave & SE 27th St
8:24 am	SE 28th St & SE 44th Ave
8:26 am	SE 28 St & SE 39 Ave
8:27 am	SE 28th St & SE 35th Ave
8:30 am	SE 34th Ave & Box 3411
8:33 am	441 SE & SE 33rd Ter
8:42 am	SE 27th Ct & 441 SE

25 OMSPM

<u>TIME</u>	<u>LOCATION</u>
4:05 pm	441 SE & SE 27th Ct
4:09 pm	SE 34th Ave & Box 3411
4:11 pm	SE 28th St & SE 35th Ave
4:12 pm	SE 28 St & SE 39 Ave
4:14 pm	SE 28th St & SE 44th Ave
4:16 pm	SE 43rd Ave & SE 27th St
4:17 pm	SE 26th St & Box 4033
4:19 pm	SE 34th Dr & SE 25th St
4:28 pm	441 SE & SE 33rd Ter

27 OMSAM

<u>TIME</u>	<u>LOCATION</u>
8:04 am	SE 30th Pkwy & Just before Cul de Sac
8:14 am	SE 57th Dr & SE 89th Ter
8:18 am	SE 57th Dr & SE 80th Trl
8:19 am	SE 60th Dr & SE 80th Trl
8:21 am	SE 60th Dr & SE 85th Ter
8:25 am	SE 57th Dr & SE 93rd Trl
8:26 am	SE 59th Dr & SE 91st Trl
8:29 am	SE 87th Trl & SE 68th Dr
8:30 am	SE 67th Dr & SE 88th Trl
8:32 am	SE 63rd Dr & SE 87th Blvd
8:36 am	441 SE & Box 8485

27 OMSPM

<u>TIME</u>	<u>LOCATION</u>
3:59 pm	SE 30th Pkwy & Just before Cul de Sac
4:12 pm	SE 57th Dr & SE 89th Ter
4:16 pm	SE 57th Dr & SE 80th Trl
4:17 pm	SE 60th Dr & SE 80th Trl
4:19 pm	SE 60th Dr & SE 85th Ter
4:23 pm	SE 57th Dr & SE 93rd Trl
4:24 pm	SE 59th Dr & SE 91st Trl
4:27 pm	SE 87th Trl & SE 68th Dr
4:28 pm	SE 67th Dr & SE 88th Trl
4:30 pm	SE 63rd Dr & SE 87th Blvd
4:34 pm	441 SE & Box 8485

28 OMSAM

<u>TIME</u>	<u>LOCATION</u>
8:10 am	70 E & NE 56th Ave
8:15 am	NE 96th Ave & Box 2644
8:16 am	NE 101st Ave & Box 924
8:17 am	NE 7th St & Box 9875
8:18 am	NE 96th Ave & Box 1044
8:19 am	NE 96th Ave & Box 2358
8:20 am	NE 103rd Ave & NE 28th Ln
8:21 am	NE 103rd Ave & NE 22 Ln
8:23 am	NE 103rd Ave & NE 11th Ct
8:25 am	NE 106th Ct & Yellow Dead End Sign
8:33 am	NE 112th Ave & NE 32nd St

28 OMSPM

<u>TIME</u>	<u>LOCATION</u>
4:14 pm	70 E & NE 56th Ave
4:19 pm	NE 96th Ave & Box 2644
4:25 pm	NE 101st Ave & Box 924
4:27 pm	NE 7th St & Box 9875
4:29 pm	NE 96th Ave & Box 1044
4:33 pm	NE 96th Ave & Box 2358
4:37 pm	NE 103rd Ave & NE 28th Ln
4:39 pm	NE 103rd Ave & NE 22nd St
4:42 pm	NE 103rd Ave & NE 11th Ct
4:44 pm	NE 106th Ct & Yellow Dead End Sign
4:54 pm	NE 112th Ave & NE 32nd St

31 OMSAM

<u>TIME</u>	<u>LOCATION</u>
8:12 am	NE 80th Ave & NE 16th St
8:14 am	NE 82nd Ave & NE 12th Ln
8:15 am	NE 80th Ave & NE 8th Dr
8:18 am	SE 80th Ave & Box 555
8:20 am	SE 68th Ave & SE 8th St
8:21 am	SE 60TH AVE & Box 258
8:22 am	NE 60th Ave NE 2nd St
8:23 am	NE 60th Ave & NE 4th Ln
8:25 am	NE 60th Ave & NE 9th Way
8:26 am	NE 62nd Ave & NE 7th St
8:27 am	NE 62nd Ave & NE 4th St



OSCEOLA MIDDLE SCHOOL

BUS SCHEDULE

31 OMSPM

<u>TIME</u>	<u>LOCATION</u>
4:15 pm	NE 80th Ave & NE 16th St
4:17 pm	NE 82nd Ave & NE 12th Ln
4:19 pm	NE 80th Ave & NE 8th Dr
4:22 pm	SE 80th Ave & Box 555
4:25 pm	SE 68th Ave & SE 8th St
4:29 pm	SE 60TH AVE & Box 258
4:30 pm	NE 60th Ave NE 2nd St
4:31 pm	NE 60th Ave & NE 4th Ln
4:33 pm	NE 60th Ave & NE 9th Way
4:35 pm	NE 62nd Ave & NE 7th St
4:36 pm	NE 62nd Ave & NE 4th St

35 OMSAM

<u>TIME</u>	<u>LOCATION</u>
8:30 am	NW 32nd Ave & NW 2nd St
8:31 am	NW 1st St & NW 34th Ter
8:31 am	NW 38th Ter & Box 95
8:34 am	SW 11th Ave & SW 3rd St
8:35 am	SW 11th Ave & SW 6th St
8:36 am	SW 8th St & SW 13th Ave
8:37 am	SW 11th St & SW 13th Ave

35 OMSPM

<u>TIME</u>	<u>LOCATION</u>
3:47 pm	SW 11th St & SW 13th Ave
3:48 pm	SW 8th St & SW 13th Ave
3:50 pm	SW 11th Ave & SW 6th St
3:51 pm	SW 11th Ave & SW 3rd St
3:57 pm	NW 38th Ter & Box 95
3:58 pm	NW 1st St & NW 34th Ter
3:59 pm	NW 32nd Ave & NW 2nd St

36 OMSAM

<u>TIME</u>	<u>LOCATION</u>
8:18 am	NE 18th Ter & btwn NE 3rd & 4th ST
8:19 am	NE 16th Ave & NE 8th St
8:21 am	NE 16th Ave & NE 12th St
8:21 am	NE 16th Ave & NE 14th St
8:22 am	NE 14th Ave & NE 10th St
8:23 am	NE 14th Ave & NE 6th St
8:28 am	SE 4th St & Box 516
8:29 am	SE 4th Ave & SE 6th St
8:30 am	SE 2nd Ave SE SE 7th St
8:35 am	SW 2nd Ave & SW 3rd St
8:37 am	SW 7th Ave & SW 9th St

36 OMSPM

<u>TIME</u>	<u>LOCATION</u>
3:51 pm	SW 7th Ave & SW 9th St
3:53 pm	SW 2nd Ave & SW 3rd St
3:59 pm	SE 2nd Ave SE SE 7th St
4:00 pm	SE 4th Ave & SE 6th St
4:02 pm	SE 4th St & Box 516
4:09 pm	NE 18th Ter & btwn NE 3rd & 4th ST
4:11 pm	NE 16th Ave & NE 8th St
4:13 pm	NE 16th Ave & NE 12th St
4:14 pm	NE 16th Ave & NE 14th St
4:16 pm	NE 14th Ave & NE 10th St
4:17 pm	NE 14th Ave & NE 6th St

42 OMSAM

<u>TIME</u>	<u>LOCATION</u>
8:16 am	70 E & NE 31st Ter
8:20 am	NE 64th Ave & NE 10th Ln
8:21 am	NE 64th Ave & NE 7th Ln
8:22 am	NE 64th Ave & NE 2nd St
8:23 am	SE 66th Ave & Center St
8:24 am	Center St E & 68th Ave
8:25 am	SE 68th Ave & Box 266
8:27 am	NE 70th Ave & NE 1st St
8:28 am	NE 70th Ave & NE 5th St
8:30 am	NE 70th Ave & NE 11th St
8:35 am	NE 30th Ave & Box 972

42 OMSPM

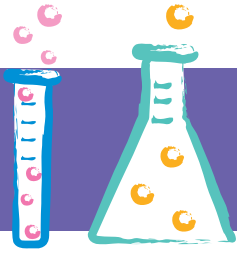
<u>TIME</u>	<u>LOCATION</u>
3:56 pm	70 E & NE 31st Ter
4:00 pm	NE 64th Ave & NE 10th Ln
4:01 pm	NE 64th Ave & NE 7th Ln
4:03 pm	NE 64th Ave & NE 2nd St
4:04 pm	SE 66th Ave & Center St
4:05 pm	Center St E & 68th Ave
4:06 pm	SE 68th Ave & Box 266
4:10 pm	NE 70th Ave & NE 1st St
4:12 pm	NE 70th Ave & NE 5th St
4:14 pm	NE 70th Ave & NE 11th St
4:20 pm	NE 30th Ave & Box 972

52 OMSAM

<u>TIME</u>	<u>LOCATION</u>
8:31 am	SE 40th Ave & SE 22nd Ct (Treasure Island)

52 OMSAM

<u>TIME</u>	<u>LOCATION</u>
4:08 pm	SE 40th Ave & SE 22nd Ct (Treasure Island)



Yearling Middle School welcomes exchange teachers

Dear Students and Parents,

Welcome to Yearling Middle School! This school year is going to be amazing. During open house, August 8, please be sure to say hello to our new assistant principal, Mrs. Kellyann Campbell and check out all of the improvements and changes which have been made over the summer.

We have been very busy this summer getting ready for you. Our building has had a beautiful facelift. The gym, bandroom, media center, course recovery lab, and the gifted/ESOL room have all had walls replaced and sparkling new coats of paint. All of our hallways have been painted and all pods have new carpet.

Our teachers have been hard at work honing their skills getting ready for you, too. We had teachers attend the PLC at Work Conference, AVID Conference, BEST Standards Math Conference, National Model Schools Conference, FSAA Training, and Computer Science Conference. We have many teachers who are coming back to school early to plan activities, create lessons and get ready for your arrival.

YMS is privileged this year to have a large group of exchange teachers. These folks are experienced teachers from other countries who have come to learn about the United States and in turn will teach our students about their home cultures. We have teachers coming from Jamaica, Mexico, Ghana, Nicaragua, India, and the Philippines. We are also so blessed to have Leslie Maynor joining us from North Elementary, Hannah Keith from Rock Solid Cristian Academy, Susan Swabb from South Fork High School, Porter Retcher from Ohio, and Tracina Bostic from West Virginia. We can't wait for you to meet our new secretary, Amber Dryden; ESOL para, Angel Aguirre; instructional para, Courtney Nunez; and our new reading coach Mrs. Tammy Wright.

YMS will hold a special 6th grade open house on Monday, August 8 from 5:00-7:00 pm with our regular open house for 7th and 8th graders from 6:00-8:00 pm. Be sure to check your school email for our first newsletter on Sunday, August 7th.

Get your supplies and clothes ready! We will see you on Wednesday, August 10 at 9:00 am for the first day of school.

With great anticipation,
Dr. Pat McCoy and
Mrs. Kellyann Campbell





YEARLING MIDDLE SCHOOL

BUS SCHEDULE

02 YMS AM

TIME	LOCATION
7:55 am	NW 128th Ave & Box 3038
8:09 am	NW 149th Ter & NW 63rd Ln
8:26 am	NW 28th Ave & NW 4th St
8:27 am	NW 22nd Ave & NW 4th St
8:28 am	NW 26th Ave & NW 6th St
8:30 am	NW 8th St & End of Road

02 YMS PM

TIME	LOCATION
4:11 pm	NW 8th St & End of Road
4:14 pm	NW 26th Ave & NW 6th St
4:16 pm	NW 22nd Ave & NW 4th St
4:17 pm	NW 28th Ave & NW 4th St
4:31 pm	NW 128th Ave & Box 3038
4:36 pm	NW 149th Ter & NW 63rd Ln

06 YMS AM

TIME	LOCATION
8:07 am	NW 160th Dr & NW 214th Cir
8:16 am	98 N & Camp Grace
8:28 am	98 N & Bishop Dairy
8:30 am	98 N & NW 120th St
8:31 am	NW 36th St & NW 40th Dr
8:42 am	NW 36th St & NW 23rd Ave
8:44 am	NW 36th St & NW 18th Ave

06 YMS PM

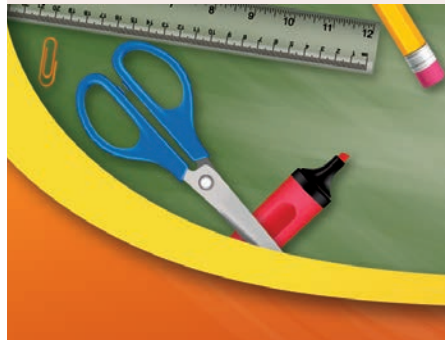
TIME	LOCATION
3:50 pm	NW 36th St & NW 18th Ave
3:51 pm	NW 36th St & NW 23rd Ave
3:54 pm	NW 36th St & NW 40th Dr
4:03 pm	98 N & NW 120th St
4:06 pm	98 N & Bishop Dairy
4:10 pm	98 N & Camp Grace
4:17 pm	NW 160th Dr & NW 214th Cir

10 YMS AM

TIME	LOCATION
8:17 am	NW 115th Dr & NW 2nd Ter
8:19 am	NE 115th Dr & NE 3rd Cir
8:24 am	NE 110th St & NE 1st Way
8:26 am	NW 106th St & NW 8th Ave
8:28 am	NW 102nd St & NW 8th Ave
8:29 am	NW 8th Ave & NW 98th St
8:33 am	NW 98th St & Center Ave
8:34 am	441 N & Box 9084
8:36 am	441 N & Box 4647
8:39 am	NW 36th St & NW 4th Ave
8:40 am	NW 36th St & NW 8th Ave
8:41 am	NW 36th St & NW 10th Ave

10 YMS PM

TIME	LOCATION
4:18 pm	NW 36th St & NW 10th Ave
4:19 pm	NW 36th St & NW 8th Ave
4:20 pm	NW 36th St & NW 4th Ave
4:30 pm	441 N & Box 9084
4:34 pm	NW 115th Dr & NW 2nd Ter
4:36 pm	NE 115th Dr & NE 3rd Cir
4:40 pm	NE 110th St & NE 1st Way
4:43 pm	NW 106th St & NW 8th Ave
4:45 pm	NW 102nd St & NW 8th Ave
4:46 pm	NW 8th Ave & NW 98th St
4:48 pm	NW 98th St & Center Ave



14 YMS AM

TIME	LOCATION
8:14 am	NW 46th Ave & Villas
8:16 am	NW 30th St & NW 47th Ave
8:17 am	NW 30th St & Box 5277
8:18 am	NW 30th St & NW 59th Ter
8:19 am	NW 30th St & Box 6642
8:21 am	NW 30th St & Box 7275
8:26 am	NW 24th St & NW 53rd Ter
8:27 am	NW 24th St & NW 63rd Ter
8:31 am	NW 50th Ave & NW 27th St

14 YMS PM

TIME	LOCATION
4:13 pm	NW 46th Ave & Villas
4:15 pm	NW 30th St & NW 47th Ave
4:16 pm	NW 30th St & Box 5277
4:18 pm	NW 30th St & NW 59th Ter
4:20 pm	NW 30th St & Box 6642
4:22 pm	NW 30th St & Box 7275
4:28 pm	NW 24th St & NW 53rd Ter
4:30 pm	NW 24th St & NW 63rd Ter
4:33 pm	NW 50th Ave & NW 27th St

15 YMS AM

TIME	LOCATION
8:04 am	NE 128th Ave & Faith Farm
8:06 am	NE 128th Ave & NE 101st St
8:10 am	NE 120th St & NE 124th Ave
8:18 am	NE 120th St & NE 104th Ave
8:20 am	NE 120th St & Box 7480
8:23 am	NE 120th St & Box 6611
8:25 am	NE 120th St & Box 6251
8:29 am	NE 144th St & Box 2050
8:30 am	NE 138th St & NE 18th Ave
8:34 am	NE 131st Ln & NE 22nd Ave
8:35 am	NE 131st Ln & NE 14th Ave



YEARLING MIDDLE SCHOOL

BUS SCHEDULE

15 YMS PM

<u>TIME</u>	<u>LOCATION</u>
4:01 pm	NE 131st Ln & NE 14th Ave
4:02 pm	NE 131st Ln & NE 22nd Ave
4:05 pm	NE 138th St & NE 18th Ave
4:07 pm	NE 144th St & Box 2050
4:17 pm	NE 120th St & Box 6251
4:18 pm	NE 120th St & Box 6611
4:20 pm	NE 120th St & Box 7480
4:23 pm	NE 120th St & NE 104th Ave
4:26 pm	NE 120th St & NE 124th Ave
4:29 pm	NE 128th Ave & NE 101st St
4:32 pm	NE 128th Ave & Faith Farm

21 YMS AM

<u>TIME</u>	<u>LOCATION</u>
8:20 am	NE 48th Ave & 16th Ct
8:27 am	NE 32nd Ave & NE 8th St
8:28 am	NE 11th Ln & NE 29th Ter
8:29 am	NE 28th Ave & NE 8th St
8:32 am	70 E & NE 24th Ave
8:34 am	70 E & River Run
8:37 am	NE 6th St & NE 4th Ave
8:40 am	441 N & NE 11th St

21 YMS PM

<u>TIME</u>	<u>LOCATION</u>
4:03 pm	NW 9th St & Box 420
4:04 pm	NW 11th St & NW 3rd Ave
4:17 pm	NE 48th Ave & n 16th Ct
4:23 pm	NE 32nd Ave & NE 8th St
4:25 pm	NE 11th Ln & NE 29th Ter
4:27 pm	NE 28th Ave & NE 8th St
4:31 pm	70 E & NE 24th Ave
4:34 pm	70 E & River Run
4:36 pm	NE 6th St & NE 4th Ave
4:38 pm	441 N & NE 11th St

24 YMS AM

<u>TIME</u>	<u>LOCATION</u>
8:03 am	NE 168th St & Fire Station
8:07 am	NE 160th St & NE 1st Way
8:10 am	NW 160th St & NW 12th Ter
8:15 am	NW 32nd Ave & NW 175th Ct
8:17 am	NW 32nd Ave & NW 168th Ct
8:21 am	NW 160th St & Box 3283
8:23 am	NW 38th Ave & NW 167th Ct
8:27 am	NW 160th St & Box 4900
8:32 am	NW 30th Ter & Box 15868
8:34 am	NW 144th Dr & Box 1435
8:38 am	NW 144th Dr & NW 9th Ave
8:42 am	441 N & NE 138th St
8:44 am	441 N & Oak Leaf
8:45 am	441 N & Box 12600

24 YMS PM

<u>TIME</u>	<u>LOCATION</u>
3:57 pm	441 N & Box 12600
3:58 pm	441 N & Oak Leaf
3:59 pm	441 N & NE 138th St
4:04 pm	NW 144th Dr & NW 9th Ave
4:06 pm	NW 144th Dr & Box 1435
4:11 pm	NW 30th Ter & Box 15868
4:15 pm	NW 160th St & Box 4900
4:23 pm	NW 38th Ave & NW 167th Ct
4:26 pm	NW 160th St & Box 3283
4:29 pm	NW 32nd Ave & NW 168th Ct
4:33 pm	NW 32nd Ave & NW 175th Ct
4:40 pm	NW 160th St & NW 12th Ter
4:43 pm	NE 160th St & NE 1st Way
4:46 pm	NE 168th St & Fire Station

26 YMS AM

<u>TIME</u>	<u>LOCATION</u>
8:00 am	NW 144th Ave & NW 304th St
8:02 am	NW 144th Ave & NW 286th St
8:03 am	NW 144th Ave & NW 272nd St
8:04 am	NW 144th Ave & NW 256th St
8:06 am	NW 144th Ave & NW 248th St
8:08 am	NW 240th St & Box 12600
8:13 am	NW 240th St & Box 5252
8:23 am	NE 224th St & NE 45th Ter
8:24 am	NE 224th St & NE 48th Ave
8:26 am	NE 224th St & Box 5620
08:30 am	441 N & NE MAC 207th St
08:32 am	441 N & Mac (Church)

26 YMS PM

<u>TIME</u>	<u>LOCATION</u>
3:48 pm	441 N & Mac Church
3:53 pm	441 N & NE MAC 207th St
4:03 pm	NE 224th St & Box 5620
4:07 pm	NE 224th St & NE 48th Ave
4:12 pm	NE 224th St & NE 45th Ter
4:28 pm	NW 240th St & Box 5252
4:40 pm	NW 240th St & Box 12600
4:45 pm	NW 144th Ave & NW 248th St
4:47 pm	NW 144th Ave & NW 256th St
4:51 pm	NW 144th Ave & NW 272nd St
4:54 pm	NW 144th Ave & NW 286th St
4:58 pm	NW 144th Ave & NW 304th St



YEARLING MIDDLE SCHOOL

BUS SCHEDULE

29 YMS AM

<u>TIME</u>	<u>LOCATION</u>
7:55 am	NW 192nd Ave & NW 320th St
7:56 am	NW 192nd Ave & NW 312th St
7:57 am	NW 192nd Ave & NW 304th St
7:59 am	NW 192nd Ave & NW 288th St
8:01 am	NW 192nd Ave & NW 280th St
8:03 am	NW 192nd Ave & NW 272nd St
8:05 am	NW 192nd Ave & NW 256th St
8:07 am	NW 192nd Ave & Nw 248th St
8:12 am	700 A Store & NW 176th Ave
8:16 am	NW 176th Ave & NW 203rd St
8:17 am	NW 176th Ave & NW 192 St
8:20 am	NW 176th Ave & Box 16500
8:33 am	NW 36th St & NW 38th Ave

29 YMS PM

<u>TIME</u>	<u>LOCATION</u>
3:43 pm	NW 36th St & NW 38th Ave
4:03 pm	NW 176th Ave & Box 16500
4:05 pm	NW 176th Ave & NW 192 St
4:06 pm	NW 176th Ave & NW 203rd St
4:08 pm	NW 176th Ave & 700 A Store
4:12 pm	NW 192nd Ave & Nw 248th St
4:14 pm	NW 192nd Ave & NW 256th St
4:17 pm	NW 192nd Ave & NW 272nd St
4:19 pm	NW 192nd Ave & NW 280th St
4:20 pm	NW 192nd Ave & NW 288th St
4:22 pm	NW 192nd Ave & NW 304th St
4:24 pm	NW 192nd Ave & NW 312th St
4:26 pm	NW 192nd Ave & NW 320th St

32 YMS AM

<u>TIME</u>	<u>LOCATION</u>
8:23 am	NW 9th St & Box 420
8:25 am	NW 11th St & NW 3rd Ave
8:29 am	NW 2nd Ave & NW 6th St
8:33 am	NW 11th Ave & NW 3rd St
8:35 am	70 W & Box 1659
8:37 am	98 N & NW 3rd Ln
8:38 am	NW 18th Ave & NW 6th St
8:41 am	NW 9th Ave & NW 7th St

33 YMS AM

<u>TIME</u>	<u>LOCATION</u>
7:36 am	441 N & NE 290th Trl
7:39 am	441 N & NE 308 St
7:40 am	441 N & Box 31100
7:42 am	441 N & NE 9th Ave
7:46 am	NE 342nd Trl & NE 4th Dr (Ranchettes)
7:50 am	NE 342nd Trl & NE 356 Ct
7:54 am	NE 342nd Trl & NE 361st Ct
7:57 am	NE 366th Trl & NE 9th Dr
8:00 am	NW 364th Rd & Box 864
8:03 am	NW 392nd St & NW 24th Dr (Pinelands)
8:17 am	NW 344th St & NW 25th Ave (Rocking K)
8:19 am	NW 344th St & NW 21st Ave
8:25 am	NE 304th St & NE 23rd Way
8:28 am	NE 301st Blvd & Box 3255
8:38 am	NE 304th St & Box 4815
8:40 am	NE 304th St & NE 55th Ave
8:45 am	NE 48th Ave & Box 22820
8:47 am	NE 48th Ave & Box 23721
8:56 am	441 N & MAC Playground

32 YMS PM

<u>TIME</u>	<u>LOCATION</u>
3:56 pm	NW 9th Ave & NW 7th St
3:57 pm	NW 11th Ave & NW 3rd St
3:59 pm	70 W & Box 1659
4:02 pm	98 N & NW 3rd Ln
4:05 pm	NW 18th Ave & NW 6th St
4:09 pm	NW 2nd Ave & NW 6th St

33 YMS PM

<u>TIME</u>	<u>LOCATION</u>
3:50 pm	441 N & MAC Playground
3:57 pm	NE 48th Ave & Box 23721
3:59 pm	NE 48th Ave & Box 22820
4:04 pm	NE 304th St & NE 55th Ave
4:07 pm	NE 304th St & Box 4815
4:11 pm	NE 301st Blvd & Box 3255
4:15 pm	NE 304th St & NE 23rd Way
4:17 pm	441 N & NE 308 St
4:18 pm	441 N & Box 31100
4:20 pm	441 N & NE 9th Ave
4:24 pm	NE 342nd Trl & NE 4TH DR (Ranchettes)
4:26 pm	NE 342nd Trl & NE 356 Ct
4:27 pm	NE 342nd Trl & NE 361st Ct
4:30 pm	NE 366th Trl & NE 9th Dr
4:33 pm	NW 364th Rd & Box 864
4:39 pm	NW 392nd St & NW 24th Dr (Pinelands)
4:46 pm	NW 344th St & NW 25th Ave (Rocking K)
4:48 pm	NW 344th St & NW 21st Ave
4:55 pm	441 N & NE 290th Trl



YEARLING MIDDLE SCHOOL

BUS SCHEDULE

39 YMS AM

TIME	LOCATION
8:24 am	NE 54th Trl & NE 50th Ct
8:25 am	NE 54th Trl & Box 2258
8:26 am	NE 52nd Dr & NE 54th Trl
8:28 am	NE 54th Trl & NE 56th Pkwy
8:29 am	NE 59th Ct & NE 60th Ct
8:30 am	NE 59th Ct & NE 54th Way
8:39 am	NW 32nd St & NW 34th Ave
8:41 am	NW 36th St & NW 28th Ave

40 YMS PM

TIME	LOCATION
3:48 pm	NW 36th St & NW 33rd Ave
3:54 pm	NW 18th St & NW 32nd Dr
3:55 pm	NW 18th St & NW 36th Ter
3:57 pm	NW 18th St & NW 38th Ave
3:58 pm	NW 18th St & NW 42nd Ave
3:59 pm	NW 18th St & NW 44th Ave
4:00 pm	NW 18th St & NW 45th Ter

55 YMS AM

TIME	LOCATION
8:29 am	NW 80th Ave & NW 82nd Ct
8:31 am	NW 80th Ave & NW 86th Ct
8:32 am	NW 80th Ave & NW 90th Ct
8:34 am	NW 80th Ave & NW 92nd Ct
8:35 am	NW 80th Ave & NW 96th Ct
8:40 am	98 N & NW 67th Ln
8:42 am	98 N & Box 4080

39 YMS PM

TIME	LOCATION
4:12 pm	NW 36th St & NW 28th Ave
4:14 pm	NW 32nd St & NW 34th Ave
4:26 pm	NE 59th Ct & NE 54th Way
4:27 pm	NE 59th Ct & NE 60th Ct
4:30 pm	NE 54th Trl & NE 56th Pkwy
4:31 pm	NE 52nd Dr & NE 54th Trl
4:33 pm	NE 54th Trl & Box 2258
4:35 pm	NE 54th Trl & NE 50th Ct

53 YMS AM

TIME	LOCATION
ROUTE 57 PM	
8:21 am	70 E & Gracewood
8:24 am	NE 122nd Dr & Box 4833
8:30 am	NE 80th Ave & NE 37th St
8:35 am	70 E & NE 71st Ave
8:37 am	70 E & NE 64th Dr
8:39 am	70 E & NE 55th Trl

56 YMS PM

TIME	LOCATION
3:47 pm	YMS
3:58 pm	NW 36th St & NW 24th Ave
4:02 pm	98 N & Box 4080
4:07 pm	98 N & NW 67th Ln
4:11 pm	NW 80th Ave & NW 82nd Ct
4:13 pm	NW 80th Ave & NW 86th Ct
4:15 pm	NW 80th Ave & NW 90th Ct
4:17 pm	NW 80th Ave & NW 92nd Ct
4:19 pm	NW 80th Ave & NW 96th Ct

40 YMS AM

TIME	LOCATION
8:30 am	NW 18th St & NW 45th Ter
8:31 am	NW 18th St & NW 44th Ave
8:32 am	NW 18th St & NW 42nd Ave
8:34 am	NW 18th St & NW 38th Ave
8:35 am	NW 18th St & NW 36th Ter
8:38 am	NW 18th St & NW 32nd Dr
8:43 am	NW 36th St & NW 33rd Ave

54 YMS AM

TIME	LOCATION
8:00 am	70 W & NW 141st Ave
8:03 am	Broadland Ln & Jordan Ter
8:06 am	Brinkerhoff Ln & Kelton
8:10 am	SW Rucks Dairy Rd & Box 2527

57 YMS PM

TIME	LOCATION
ROUTE 53 AM	
4:18 pm	YMS
4:25 pm	70 E & Gracewood
4:30 pm	NE 122nd Dr & Box 4833
4:37 pm	NE 80th Ave & NE 37th St
	(Turn Around)
4:42 pm	70 E & NE 71st Ave (Larson 7)
4:43 pm	70 E & NE 64th Dr (Larson Foreman Line)
4:45 pm	70 E & NE 55th Trl
4:49 pm	NE 11th Ln & NE 28th Ave

54 YMS PM

TIME	LOCATION
4:02 pm	70 W & NW 141st Ave
4:09 pm	Broadland Ln & Jordan Ter
4:11 pm	Brinkerhoff Ln & Kelton Ter
4:15 pm	SW Rucks Dairy Rd & Box 2527



Okeechobee High School: Take part in telling the OHS story

Welcome to the 2022-2023 School Year!

The community, students, staff, and faculty all take part in telling the story of Okeechobee High School. Follow us on Facebook: @OkeechobeeHS on Instagram: @ohsbrahmans or follow the hashtags: #GoBrahmans and #TheBrahmanWay

We are excited to see the Okeechobee High School Class of 2023 take their place as school leaders and to be living examples of The Brahman Way. This phrase refers to the tradition of "Excellence through P.R.I.D.E." while also addressing our school's mission to create a community of life-long learners who care and support one another as individuals. Each graduating class has a "personality" that makes them memorable. I have come to know this group of seniors as those who know how to embrace school spirit and who take true Brahman PRIDE in showing up and being active participants inside the classroom and out in our school and greater community. Our traditions are the very foundation upon which we build our school culture. Perseverance, Respect, Integrity, Determination, and Ethics will ring loud and true as we are able to use this school year to show what makes OHS so special.

Our goal is to give each student options after high school. Becoming College and Career Ready gives every graduate the chance to start building a resume' or transcript that communicates their interests and work ethic. Every student has

the opportunity to take courses that will lead them toward post-secondary success. Rigorous courses on our campus ensures that students are prepared for the next level, no matter where they begin. Our Advanced Placement (AP) offerings have continued to grow year after year. We are proud to offer AP Literature, Language, Art, Chemistry, Environmental Science, Human Geography, World History, US History, Macroeconomics, Government and Politics, Psychology, Computer Science Principles, Spanish, and Calculus. Our AP exam pass rate meets or exceeds the state average in several of our course offerings. This past school year we had 6 graduates earn an AP Capstone diploma or certificate, a national honorary diploma distinction showing the successful completion of 4 or more AP courses and AP exams, and passing the task and AP test of the two Capstone courses, AP Seminar (Junior year) and AP Research (Senior year). This year is expected to more than double that number. The OHS Capstone program had an averaged an 89% pass rate this past school year. Through our partnership with Indian River State College, students are able to be dual enrolled as a high school and college student. Last year Okeechobee High School graduated a record breaking 31 high school seniors who had successfully completed an Associates of Arts

degree from IRSC. Students are offered a wide array of courses in multiple disciplines. English, Math, Science, History, Education (teaching), and Student Success courses are offered during the school day. This year we are excited to announce the addition of vocational career programs through IRSC. Students may now take classes toward certifications in HVAC, Welding, and the Medical Assistant professions. Please have your student reach out to his/her guidance counselor if he/she is interested in taking any of these new classes. We are also fortunate to provide a shuttle that runs between the high school and the Dixon Hendry campus for our students to have access to these courses during the school day. Students have the potential to earn both college and high school credit for free if they are able to complete the course with a "C" or better. Our OHS CTE programs continue to impress with the number of industry certificates earned during the school year. With last year's total topping out at 419 industry certifications, our CTE programs are stronger than ever. Their successes are mirrored in their popularity, as many of our CTE programs now have wait lists. We are proud to offer programs in Health Science, Building Construction Technologies, Auto Maintenance and Light Repair, Animal Science, Technical Ag Operations, Aquaculture, Digital Design, and Digital Information Technologies. Many of our CTE programs have a professional

relationship with community businesses and trade schools. Taking these courses allow students to gather information, earn nationally recognized professional certificates, and expand their career network while still in high school.

We are looking forward to hosting Open House and getting to meet our students face to face for the first time this school year. Our Sophomore Open House is an event that is exclusive to our incoming 10th graders and their parents. The Sophomore Open House will be held on Thursday, August 4 at OHS main campus from 6:00 PM to 8:00 PM. This event is more structured to allow for both students and parents to ask questions. Parents will meet with the principal in the gym while students will gather in the OHS Lecture Hall. After a brief orientation for both groups, they will reunite with their new schedule and map in hand to roam the campus and meet their teachers. The traditional Open House for all other students will be held Monday, August 8 from 7:00 PM – 9:00 PM.

The plans for construction of the new school building are underway! This school year will be the first that we will be going to school on an active construction site. As our campus begins to adapt to the changing landscape, parking may also have to undergo changes in location and availability. With so many unknown variables in the months ahead, the sale of parking stickers will be limited. Priority will be given to Seniors, then those who are in band, JROTC, athletes, and those who have proof of having a job. Parking is not guaranteed, nor is a permanent location promised. In the event that the construction process closes sold parking spaces, we will do our best to make accommodations in an alternative location. If we are not able to relocate all spaces sold, refunds will be given to those who no longer have a parking space. As in previous years, Seniors will be given the opportunity to purchase their parking passes first on Monday, August 8 from 1:00 PM – 4:00 PM. Juniors and Sophomores who are athletes or who have proof of

employment will later be able to purchase parking stickers from 2:30 PM – 4:00 PM. All others may purchase parking passes during the first week of school. To expedite the process for parking stickers, students must bring their Driver's License, Proof of Insurance, Vehicle Registration, and signed Drug Testing Permission slip. This year, we are asking Juniors and Sophomores who wish to park on campus to also provide proof of employment. We will have a list of athletes from previous years available. All students purchasing parking stickers on Monday, August 8 must have a 2.0 GPA, and must pay for any unpaid fines or fees. Juniors and Seniors that have a 3.5 or higher GPA will receive free parking. For all other students who have at least a 2.0 GPA, parking fees are \$40 per year. Students under a 2.0 GPA will be charged \$50 per semester. Students under a 1.5 GPA are not eligible to park on campus.

Communication is vital to your student's success. In order to receive a weekly email containing the highlights and events of the week, please make sure that you have added your email account to your student's Skyward. We welcome and encourage parent input and involvement. If you would like to be a part of our school advisory committee, please email me for more information. I can be reached at myersl@okee.k12.fl.us

Daily decisions route your path to graduation. Are you choosing to move forward? Class of 2023, this is your year! Every Senior in your seat at Graduation on May 27 at 9:00 AM.

Looking forward to a productive and meaningful 2022-2023 school year!



Lauren Myers
Principal





Lake Okeechobee News

SouthCentralFloridaLife.com

.....

TO SUBSCRIBE, CALL 863.824.5933

313 NW 4th Ave
Okeechobee, FL 34972

Next to the
Judicial Center

OAA encourages and supports students to excel

I would like to extend an enthusiastic "Welcome back" to all of our students, parents, teachers, and staff to the 2022-2023 school year. We are excited for the new school year to begin and look forward to welcoming students back to campus on Wednesday, August 10th. I am pleased to lead OAA's highly qualified staff. We have a dedicated group of teachers and support staff that pull together to help all our students realize their potential and build a better future. Our students create personalized educational experiences where they must "own" their individual plan for success; they are guided and supported throughout this process by caring and respectful staff members. Our teachers then support and engage students to demonstrate their learning through writing and various assessment activities. This year our teachers will be focused on engaging and motivating students, knowing individual student needs, and fostering academic and social success.

We are excited to expand our work in continuing to improve opportunities for students to avoid retention and stay on track to

graduate with their class. OAA's acceleration programs (REACH and GAP) provided many middle and high school students, that were in danger of falling behind and dropping out, with a plan to succeed academically and catch up with their graduation cohort. Our GAP program continued to produce graduates with many of these students becoming early graduates. To help address severe student achievement gaps created by a global pandemic. This year we are doubling our REACH programs in order to provide academic acceleration programs to more students.

Students, please remember that you are in charge of your learning. We have amazing teachers at OAA who will provide you the opportunities to grow socially and academically. However, we need your commitment to your own education to ensure that you take advantage of such opportunities to learn and produce excellence. I believe each of you have the capability to learn and succeed. So, let's work together to create positive routines and develop the studying habits that will put you in a position this school year to

excel.

Parents, your involvement is vital to our student's academic success. Therefore, please encourage your student to come to school every day. Daily attendance and regular communication with your student's teachers are essential for your student's academic, social, and emotional growth. I would like to encourage you to join the OAA School Advisory Council. We need your input and are happy that you and your students are part of OAA.

Please join us for Open House on Thursday, August 4th from 6:00-8:00 PM. Our teachers and staff look forward to meeting you and welcoming you to our school. The first day of school is Tuesday, August 10th.

If there is ever anything you need, please do not hesitate to call me or stop by my office.

Let's make this school year your best yet! Go Jaguars!

Sincerely,
Audie Ash
Principal



Freshman Campus welcomes Class of 2026!

Parents, Students, and Community Stakeholders,

Okeechobee High School Freshman Campus is excited to welcome the Okeechobee High School Class of 2026! The transition from middle school to high school is a pivotal year for students as they adjust to a new school, a new set of peers, and new teachers all at once. Add on the expectations of being a "high school" student and it becomes easy to see how, for many students, freshman year can be their toughest year of high school. However, be assured the

faculty and staff at Okeechobee High School Freshman Campus are working to ensure that our students are successful by setting an academic foundation that is solid and will carry our students on to Okeechobee High School and beyond.

Ninth grade is a critical year for students to establish effective work habits and strategies to help them successfully navigate high school. Our faculty work collaboratively to ensure students are scheduled according to their individual educational needs. Our Pre-AP English 1 teachers

are prepared to deliver lessons based on the principles of close observation and analysis, evidence-based writing, higher-order questioning, and academic conversation. These skills will equip students for the full range of academic options, including Honors, Advanced Placement, and Dual Enrollment, available to them at Okeechobee High School. Students can begin to take challenging Honors Biology, Honors Geometry, and Advanced Placement and Dual Enrollment classes when they arrive on our campus. Students needing

support in reading will have Intensive Reading and personalized instruction using Read 180. Students who need math support will have Algebra 1a this year, providing them with two years of Algebra instruction before taking the graduation requirement End of Course Algebra 1 exam. Students will hear early and often about both promotion and graduation requirements.

We will work to ensure they understand that we are one Okeechobee High School, with two campuses.

We are excited for the return of students on August 10th. We look forward to seeing our students

experience their first year of Okeechobee High School, creating lasting memories of shared traditions. It is time to teach our freshman class The Brahman Way. It is time to Move Forward and Be Great!

Sincerely,



Vicki Gogans, Principal



Okeechobee Virtual School continues to improve

Welcome back, parents and students, to the 2022-2023 school year.

Our faculty and staff are eager to build on our successes from last year and continue our improvement throughout this upcoming school year. I am extremely proud that our state assessment scores demonstrated the hard work that our teachers and students put forth throughout last school year. OVS had 82% of our 3rd-5th grade students and 81% of our 6th-8th grade students test at proficiency (level 3) or above in reading. Additionally, OVS had the highest percentage of students passing the civics exam in the district and exceeded the state average by 9 percentage points. Okeechobee Virtual School had a tremendous year of academic improvement and this school year we will build on that success.

I am proud to announce that Okeechobee Virtual School will continue to operating as a Florida Virtual School franchise. We believe that the partnership of our highly qualified OVS instructors and the FLVS curriculum provided the rigorous, yet caring environment that proved to be successful in the virtual education platform. Students benefited from the creative and constructive learning approach of our instructors while working from home and enjoying aspects of the Okeechobee County school system such as sports, tutorial offerings, field trips, extracurricular activities, social gatherings, and the graduation ceremony.

I feel both honored and privileged to be your principal and to work with our dedicated staff, our wonderful students, and all of the supportive parents and community members that make OVS a great school. Together we will be committed to developing all students academically, emotionally, and socially. Therefore, we are committed to partnering with you to ensure that our virtual learning environment offers a well-rounded education, develops character, and provides engaging academic challenges for all OVS students. Please be encouraged to join the OVS School Advisory Council. We need your input and are happy that you and your students are part of OVS. Thank you for ensuring that your student is completing assignments online everyday and regularly connecting with your student's teachers.

Our Open House is on Wednesday, August 4th from 6:00-8:00 PM. At this year's Open House/Orientation, we will discuss the requirements and benefits of being an OVS student. Students will also receive their devices, choose their elective courses, and meet their teachers.

Thank you for being part of our Okeechobee Virtual School family. If there is ever anything you need, please do not hesitate to call me or stop by my office.

Together we will make the 2022-23 school year the best! Go Razorbacks!

Sincerely,
Audie Ash
Principal

Okeechobee Virtual School





OKEECHOBEE HIGH SCHOOL

BUS SCHEDULE

01 OHS AM

<u>TIME</u>	<u>LOCATION</u>
6:07 am	SE 126th Blvd & Box 9357
6:13 am	441 SE & Douglas Turnaround
6:13 am	441 SE & Box 13895
6:16 am	441 SE & SE 118th Terr
6:18 am	441 SE & Box 11486
6:19 am	441 SE & Box 10366
6:20 am	441 SE & Box 9913
6:23 am	441 SE & Ancient Oaks
6:26 am	441 SE & Box 5320
6:29 am	441 SE & SE 50th Ave
6:30 am	441 SE & SE 42nd PI
6:31 am	441 SE & Btwn SE 35th & 36th Ave

01 OHS PM

<u>TIME</u>	<u>LOCATION</u>
2:30 pm	441 SE & Btwn SE 35th & 36th Ave
2:31 pm	441 SE & SE 42nd PI
2:33 pm	441 SE & SE 50th Ave
2:34 pm	441 SE & Box 5320
2:36 pm	441 SE & Ancient Oaks
2:40 pm	441 SE & Box 9913
2:41 pm	441 SE & Box 10366
2:43 pm	441 SE & Box 11486
2:44 pm	441 SE & SE 118th Terr
2:48 pm	441 SE & Box 13895
2:49 pm	441 SE & Douglas Turnaround
2:56 pm	SE 126th Blvd & Box 9357

02 OHSAM

<u>TIME</u>	<u>LOCATION</u>
6:03 am	NW 56th St & NW 149th Ter
6:05 am	NW 56th St & NW 154th Ave
6:20 am	NW 36th Ter & NW 4th St
6:21 am	NW 3rd St & Box 3559
6:22 am	NW 3rd St & btwn 32nd Ave & 34th Ter

02 OHS PM

<u>TIME</u>	<u>LOCATION</u>
2:27 pm	NW 3rd St & btwn 32nd Ave & 34th Ter
2:28 pm	NW 3rd St & Box 3559
2:29 pm	NW 36th Ter & NW 4th St
2:40 pm	NW 56th St & NW 154th Ave
2:45 pm	NW 56th St & NW 149th Ter

05 OHSAM

<u>TIME</u>	<u>LOCATION</u>
6:20 am	SE 18th Ter & SE 38th Trl
6:21 am	SE 18th Ter & SE 34th Ln
6:22 am	SE 18th Ter & SE 30th St
6:24 am	SE 24th Blvd & SE 19th Terr
6:26 am	SE 27th Ave & SE 25th Dr
6:28 am	SE 27th Ave & SE 27th St

05 OHS PM

<u>TIME</u>	<u>LOCATION</u>
2:30 pm	SE 18th Ter & SE 38th Trl
2:32 pm	SE 18th Ter & SE 34th Ln
2:33 pm	SE 18th Ter & SE 30th St
2:35 pm	SE 24th Blvd & SE 19th Terr
2:37 pm	SE 27th Ave & SE 25th Dr
2:38 pm	SE 27th Ave & SE 27th St

06 OHS AM

<u>TIME</u>	<u>LOCATION</u>
5:48 am	NW 160th Dr & NW 203rd Ave
5:58 am	NW 189th Ave & NW 83rd Trl
6:10 am	98 N & NW 120th St
6:16 am	NW 80th Ave & NW 82nd Ct
6:17 am	NW 80th Ave & NW 86th Ct
6:19 am	NW 80th Ave & NW 90th Ct
6:21 am	NW 80th Ave & NW 96th Ct
6:23 am	98 N & NW 67th Ln
6:26 am	98 N & Box 5763
6:29 am	98 N & Lanier Ranch

06 OHS PM

<u>TIME</u>	<u>LOCATION</u>
2:27 pm	98 N & Lanier Ranch
2:29 pm	98 N & Box 5763
2:31 pm	98 N & NW 67th Ln
2:37 pm	NW 80th Ave & NW 96th Ct
2:39 pm	NW 80th Ave & NW 90th Ct
2:41 pm	NW 80th Ave & NW 86th Ct
2:43 pm	NW 80th Ave & NW 82nd Ct
2:49 pm	98 N & NW 120th St
3:01 pm	NW 189th Ave & NW 83rd Trl
3:15 pm	NW 160th Dr & NW 203rd Ave





OKEECHOBEE HIGH SCHOOL

BUS SCHEDULE

07 OHS AM

TIME LOCATION

ROUTE 34 PM:

5:54 am	70 E & Gracewood
5:58 am	70 E & NE Goodbread Ranch
6:05 am	NE 128th Ave & Box 6375
6:08 am	NE 128th Ave & NE 79th Dr
6:10 am	NE 128th Ave & Box 11741
6:11 am	NE 120th St & NE 124th Ave
6:12 am	NE 120TH ST & Box 11800
6:14 am	NE 120th St & NE 84th Ave
6:16 am	NE 120TH ST & Box 7480
6:19 am	NE 120th St & Box 6790
6:21 am	NE 120th St & Box 6251
6:29 am	NE 144th St & Box 2050
6:32 am	NE 131st Ln & NE 26th Ave
6:33 am	NE 131st Ln & NE 22nd Ave
6:34 am	NE 131st Ln & NE 18th Ave
6:37 am	441 N & Box 12600
6:42 am	441 N & NW 50 Dr

07 OHS PM

TIME LOCATION

2:18 pm	441 N & NW 50 Dr
2:23 pm	441 N & Box 12600
2:26 pm	NE 131st Ln & NE 18th Ave
2:27 pm	NE 131st Ln & NE 22nd Ave
2:28 pm	NE 131st Ln & NE 26th Ave
2:32 pm	NE 144th St & Box 2050
2:42 pm	NE 120th St & Box 6251
2:44 pm	NE 120th St & Box 6790
2:45 pm	NE 120TH ST & Box 7480
2:47 pm	NE 120th St & NE 84th Ave
2:51 pm	NE 120TH ST & Box 11800
2:53 pm	NE 120th St & NE 124th Ave
2:54 pm	NE 128th Ave & Box 11741
2:59 pm	NE 128th Ave & NE 79th Dr
3:01 pm	NE 128th Ave & Box 6375

08 OHSPM

TIME LOCATION

ROUTE 15.2 AM:

2:23 pm	NW 36th St & NW 38th Ave
---------	--------------------------

ROUTE 10 AM:

2:33 pm	NE 54th Trl & Box 2388
2:35 pm	NE 54th Trl & NE 52nd Dr
2:38 pm	NE 59th Ct & NE 60th Ct
2:39 pm	NE 54th Way & NE 59th Ct

10 OHSAM

TIME LOCATION

6:05 am	NW 115th Dr & NW 2nd Ter
6:06 am	NW 115th Dr & NW 3rd Cir
6:08 am	NE 110th St & NE 1st Way
6:10 am	NW 110th St & NW 8th Ave
6:12 am	NW 8th Ave & 50' before NW 106th St
6:13 am	NW 8th Ave & 50' before NW 102nd St
6:15 am	Center Ave & 50' before NE 98th St
6:16 am	NW 102nd St & Center Ave

ROUTE 8 PM:

6:26 am	NE 54th Trl & Box 2388
6:28 am	NE 54th Trl & NE 52nd Dr
6:30 am	NE 59th Ct & NE 60th Ct
6:31 am	NE 54th Way & NE 59th Ct

10 OHSPM

TIME LOCATION

2:27 pm	NW 115th Dr & NW 2nd Ter
2:29 pm	NW 115th Dr & NW 3rd Cir
2:31 pm	NE 110th St & NE 1st Way
2:33 pm	NW 110th St & NW 8th Ave
2:35 pm	NW 8th Ave & 50' before NW 106th St
2:37 pm	NW 8th Ave & 50' before NW 102nd St
2:40 pm	Center Ave & 50' before NE 98th St
2:41 pm	NW 102nd St & Center Ave

12 OHSPM

TIME LOCATION

ROUTE 36.2 AM:

2:21 pm	NW 36th St & NW 33rd Ave
---------	--------------------------

14 OHSAM

TIME LOCATION

6:12 am	NW 46th Ave & Box 2113
6:13 am	NW 46th Ave & Villas
6:15 am	NW 30th St & Box 4878
6:19 am	NW 30th St & NW 74th Ter
6:21 am	NW 30th St & Box 6552
6:22 am	NW 30th St & Box 6000
6:23 am	NW 24th St & Box 5073
6:26 am	NW 24th St & NW 63rd Ter
6:30 am	NW 30th St & NW 42nd Ave



OKEECHOBEE HIGH SCHOOL

BUS SCHEDULE

15.1 OHSAM

<u>TIME</u>	<u>LOCATION</u>
6:17 am	NW 6th St & NW 2nd Ave
6:20 am	NW 18th Ave & NW 6th St
6:21 am	NW 11th Ave & NW 5th St
6:22 am	NW 10th Ave & NW 3rd St
6:26 am	NW 9th & Ave & NW 10th St

15.1 OHSPM

<u>TIME</u>	<u>LOCATION</u>
2:19 pm	NW 6th St & NW 2nd Ave
2:23 pm	NW 18th Ave & NW 6th St
2:25 pm	NW 11th Ave & NW 5th St
2:26 pm	NW 10th Ave & NW 3rd St
2:29 pm	NW 9th & Ave & NW 10th St

15.2 OHSAM

<u>TIME</u>	<u>LOCATION</u>
ROUTE 8 PM:	
6:40 am	NW 36th St & NW 38th Ave

16 OHSAM

<u>TIME</u>	<u>LOCATION</u>
5:56 am	NE 128th Ave & NE 25th St
5:57 am	NE 128th Ave & NE 20th Ct
5:59 am	NE 128th Ave & Box 1111 & 920
6:01 am	SE 128th Ave & Box 800
6:03 am	SE 132nd Ave & SE 34th St
6:07 am	SE 138th Ave & SE 46th St
6:24 am	SE 37th Ter & SE 6th St
6:26 am	SE 8th St & SE 38th Ter
6:27 am	SE 10th St & SE 40th Ave

16 OHSPM

<u>TIME</u>	<u>LOCATION</u>
2:27 pm	SE 37th Ter & SE 6th St
2:28 pm	SE 8th St & SE 38th Ter
2:29 pm	SE 10th St & SE 40th Ave
2:40 pm	NE 128th Ave & NE 25th St
2:41 pm	NE 128th Ave & NE 20th Ct
2:43 pm	NE 128th Ave & Box 1111 & 920
2:45 pm	SE 128th Ave & Box 800
2:49 pm	SE 132nd Ave & SE 34th St
2:55 pm	SE 138th Ave & SE 46th St

17 OHSAM

<u>TIME</u>	<u>LOCATION</u>
5:58 am	441 SE & Box 8485
6:02 am	SE 57th Dr & SE 89th Ter
6:04 am	SE 57th Dr & SE 85th Ter
6:06 am	SE 60th Dr & SE 80th Trl
6:13 am	SE 57th Dr & SE 93 Trl
6:17 am	SE 30th Pkwy & Box 5873
6:19 am	SE 30th Pkwy & Just before Cul de Sac

17 OHSPM

<u>TIME</u>	<u>LOCATION</u>
2:32 pm	SE 30th Pkwy & Box 5873
2:33 pm	SE 30th Pkwy & Just before Cul de Sac
2:43 pm	SE 57th Dr & SE 93 Trl
2:50 pm	SE 57th Dr & SE 89th Ter
2:52 pm	SE 57th Dr & SE 85th Ter
2:54 pm	SE 60th Dr & SE 80th Trl
2:59 pm	441 SE & Box 8485

18 OHSAM

<u>TIME</u>	<u>LOCATION</u>
6:15 am	SW 24th Ave & SW 33rd Cir
6:17 am	SW 24th Ave & Oak Lake Villas
6:20 am	SW 24th Ave & SW 9th Ln
6:26 am	NW 1st St & NW 36th Ter
6:30 am	70 W & SW 21st Ave
6:33 am	SW 11th Ave & SW 5th St

18 OHSPM

<u>TIME</u>	<u>LOCATION</u>
2:27 pm	NW 1st St & NW 36th Ter
2:33 pm	SW 11th Ave & SW 5th St
2:36 pm	SW 24th Ave & SW 9th Ln
2:38 pm	SW 24th Ave & Oak Lake Villas
2:41 pm	SW 24th Ave & SW 33rd Cir



OKEECHOBEE HIGH SCHOOL

BUS SCHEDULE

19 OHSAM

<u>TIME</u>	<u>LOCATION</u>
6:15 am	BHR Community Center
6:18 am	78 W & Box 8825
6:22 am	78 W & Box 7650
6:27 am	SW 39th Ln & SW 13th Way
6:31 am	SW 25th St & SW 3rd Ave
6:33 am	SW 5th Ave & SW 17th St
6:35 am	SW 10 Dr & SW 14th St
6:40 am	OFC (Pick Up SW area walkers in Bus Loop)

19 OHSPM

<u>TIME</u>	<u>LOCATION</u>
2:22 pm	OFC (Drop SW area walkers in Bus Loop)
2:27 pm	SW 10 Dr & SW 14th St
2:29 pm	SW 5th Ave & SW 17th St
2:32 pm	SW 25th St & SW 3rd Ave
2:38 pm	SW 39th Ln & SW 13th Way
2:45 pm	78 W & Box 7650
2:47 pm	78 W & Box 8825
2:54 pm	BHR Community Center

24 OHSAM

<u>TIME</u>	<u>LOCATION</u>
6:07 am	NE 160th St & NE 1st Way
6:13 am	NW 32nd Ave & NW 168th Ct
6:18 am	NW 160th St & Box 3253
6:20 am	NW 38th Ave & NW 167th Ct
6:23 am	NW 144th Dr & Box 3265
6:24 am	NW 144th Dr & Box 1435
6:25 am	NW 144th Dr & NW 9th Ave
6:30 am	441 N & NE 131st Ln

24 OHSPM

<u>TIME</u>	<u>LOCATION</u>
2:23 pm	441 N & NE 131st Ln
2:26 pm	NW 144th Dr & NW 9th Ave
2:28 pm	NW 144th Dr & Box 1435
2:30 pm	NW 144th Dr & Box 3265
2:34 pm	NW 38th Ave & NW 167th Ct
2:37 pm	NW 160th St & Box 3253
2:39 pm	NW 32nd Ave & NW 168th Ct
2:45 pm	NE 160th St & NE 1st Way

20 OHS PM

<u>TIME</u>	<u>LOCATION</u>
5:57 am	SW 67th Dr & Box 720
6:00 am	SW 21st Pkwy & Box 6763
6:05 am	SW 13th St & Box 7664
6:13 am	6725 SW 9th St
6:15 am	SW 9th St & SW 85th Way
6:17 am	SW 87th Ter & SW 5th Ln
6:18 am	SW 2nd St & Box 8552
6:20 am	70 W & SW 72nd Ter
6:25 am	SW 16th St & SW 40th Dr
6:26 am	SW 34th Ter & SW 18th St
6:27 am	SW 34th Ter & SW 22nd St
6:28 am	SW 16th St & SW 28th Ave
6:30 am	SW 16th St & SW 22nd Ter
6:31 am	SW 16th St & SW 19th Ter

20 OHSAM

<u>TIME</u>	<u>LOCATION</u>
2:25 pm	SW 16th St & SW 19th Ter
2:26 pm	SW 16th St & SW 22nd Ter
2:28 pm	SW 16th St & SW 28th Ave
2:29 pm	SW 34th Ter & SW 22nd St
2:30 pm	SW 34th Ter & SW 18th St
2:32 pm	SW 16th St & SW 40th Dr
2:38 pm	SW 67th Dr & Box 720
2:40 pm	SW 21st Pkwy & Box 6763
2:43 pm	SW 13th St & Box 7664
2:47 pm	6725 SW 9th St
2:51 pm	SW 9th St & SW 85th Way
2:53 pm	SW 87th Ter & SW 5th Ln
2:54 pm	SW 2nd St & Box 8552
2:57 pm	70 W & SW 72nd Ter

25 OHSAM

<u>TIME</u>	<u>LOCATION</u>
6:22 am	SE 16th Ave & SE 4th St
6:23 am	SE 16th Ave & SE 6th Ln
6:25 am	SE 13th Ave & SE 8th St
6:27 am	SE 10th Ave & SE 6th St
6:28 am	SE 10th Ave & JW Mobile Home

25 OHSPM

<u>TIME</u>	<u>LOCATION</u>
2:21 pm	SE 16th Ave & SE 4th St
2:22 pm	SE 16th Ave & SE 6th Ln
2:23 pm	SE 13th Ave & SE 8th St
2:25 pm	SE 10th Ave & SE 6th St
2:27 pm	SE 10th Ave & JW Mobile Home

21 OHSAM

<u>TIME</u>	<u>LOCATION</u>
06:14 am	NE 14th Ave & NE 10th St
06:15 am	NE 16th Ave & NE 15th St
06:17 am	NE 16th Ave & NE 8th St
06:19 am	NE 17th Ave & NE 3rd St
06:22 am	SR 70 & River Run
06:25 am	NE 4th St & NE 4th Ave

21 OHSPM

<u>TIME</u>	<u>LOCATION</u>
2:22 pm	NE 16th Ave & NE 15th St
2:24 pm	NE 14th Ave & NE 10th St
2:26 pm	NE 16th Ave & NE 8th St
2:28 pm	NE 17th Ave & NE 3rd St
2:32 pm	SR 70 & River Run
2:34 pm	NE 4th St & NE 4th Ave



OKEECHOBEE HIGH SCHOOL

BUS SCHEDULE

26 OHS AM

<u>TIME</u>	<u>LOCATION</u>
5:57 am	NW 144th Ave & NW 304th St
6:01 am	NW 144th Ave & NW 272nd St
6:04 am	NW 144th Ave & NW 256th St
6:05 am	NW 144th Ave & NW 248th St
6:06 am	NW 144th Ave & 100' before NW 240th St
6:08 am	NW 240th St & Box 12600
6:09 am	NW 240th St & CNC Ranch
6:12 am	NW 240th St & NW 72nd Ave
6:13 am	NW 240th St & Box 5252
6:15 am	NW 240th St & NW 32nd Ave
6:25 am	441 N & MAC 3 (207)
6:30 am	441 N & MAC Playground

27 OHS AM

<u>TIME</u>	<u>LOCATION</u>
6:17 am	441 SE & SE 14th Ter
6:19 am	441 SE & Box 833
6:23 am	441 S & Town Center Apt
6:28 am	SW 11th Ave & SW 9th St

28 OHS AM

<u>TIME</u>	<u>LOCATION</u>
6:05 am	70 E & NE 31st Ter
6:08 am	70 E & NE 56th Ave
6:13 am	NE 80th Ave & Bos 1355
6:14 am	NE 82nd Ave & NE 12th Ln
6:15 am	NE 80th Ave & NE 8th Dr
6:16 am	SE 80th Ave & Box 256
6:17 am	SE 8th St & SE 68th Ave
6:21 am	NE 60th Ave & NE 2nd St
6:23 am	NE 60th Ave & NE 4th Ln
6:24 am	NE 60th Ave & NE 8th Way

26 OHSAM

<u>TIME</u>	<u>LOCATION</u>
2:30 pm	441 N & MAC Playground
2:33 pm	441 N & MAC 3 (207) (441 N)
2:43 pm	NW 240th St & NW 32nd Ave
2:47 pm	NW 240th St & Box 5252
2:51 pm	NW 240th St & NW 72nd Ave
2:58 pm	NW 240th St & CNC Ranch
3:01 pm	NW 240th St & Box 12600
3:04 pm	NW 144th Ave & 100' before NW 240th St
3:06 pm	NW 144th Ave & NW 248th St
3:08 pm	NW 144th Ave & NW 256th St
3:12 pm	NW 144th Ave & NW 272nd St
3:16 pm	NW 144th Ave & NW 304th St

27 OHSPM

<u>TIME</u>	<u>LOCATION</u>
2:30 pm	441 SE & SE 14th Ter
2:32 pm	441 SE & Box 833
2:38 pm	441 S & Town Center Apt
2:42 pm	SW 11th Ave & SW 9th St

28 OHSAM

<u>TIME</u>	<u>LOCATION</u>
2:25 pm	70 E & NE 31st Ter
2:29 pm	70 E & NE 56th Ave
2:33 pm	NE 80th Ave & Bos 1355
2:35 pm	NE 82nd Ave & NE 12th Ln
2:37 pm	NE 80th Ave & NE 8th Dr
2:40 pm	SE 80th Ave & Box 256
2:44 pm	SE 8th St & SE 68th Ave
2:49 pm	NE 60th Ave & NE 2nd St
2:50 pm	NE 60th Ave & NE 4th Ln
2:51 pm	NE 60th Ave & NE 8th Way

29 OHS AM

<u>TIME</u>	<u>LOCATION</u>
5:56 am	NW 192nd Ave & NW 304th St
5:58 am	NW 192nd Ave & NW 288th St
5:59 am	NW 192nd Ave & NW 280th St
6:00 am	NW 192nd Ave & NW 272nd St
6:02 am	NW 192nd Ave & NW 256th St
6:04 am	NW 192nd Ave & NW 244 St
6:09 am	22296 NW 176th Ave
6:10 am	NW 176th Ave & NW 208th St
6:12 am	NW 176th Ave & NW 203rd St
6:15 am	NW 176th Ave & NW 190th Rd
6:16 am	NW 176th Ave & NW 184 Dr
6:17 am	NW 176th Ave & Box 16980
6:18 am	NW 176th Ave & Box 16500
6:27 am	98 N & Flying G Ranch Box 10613

29 OHS PM

<u>TIME</u>	<u>LOCATION</u>
2:32 pm	98 N & Flying G Ranch Box 10613
2:37 pm	NW 176th Ave & Box 16500
2:39 pm	NW 176th Ave & NW 184 Dr
2:41 pm	NW 176th Ave & NW 190th Rd
2:42 pm	NW 176th Ave & NW 203rd St
2:43 pm	NW 176th Ave & NW 208th St
2:45 pm	NW 176th Ave & Box 22296
2:50 pm	NW 192nd Ave & NW 244 St
2:52 pm	NW 192nd Ave & NW 256th St
2:54 pm	NW 192nd Ave & NW 272nd St
2:55 pm	NW 192nd Ave & NW 280th St
2:57 pm	NW 192nd Ave & NW 288th St
2:59 pm	NW 192nd Ave & NW 304th St



OKEECHOBEE HIGH SCHOOL

BUS SCHEDULE

31 OHS AM

TIME	LOCATION
5:45 am	NE 96th Ave & Box 1424
5:48 am	NE 16th St & Box 10009
5:49 am	NE 96th Ave & Box 2358
5:54 am	NE 103rd Ave & NE 28th Ln
5:56 am	NE 103rd Ave & NE 17th Ln
5:58 am	NE 103rd Ave & NE 11th Ct
6:00 am	NE 103rd Ave & NE 106th Ct
6:03 am	70 E & Box 11600 (34 PM)
6:18 am	NE 122nd Dr & NE 51st Ct
6:23 am	70 E & NE 71st Ave
6:25 am	NE 8th St & NE 31st Ter (34 pm)

31 OHS PM

TIME	LOCATION
2:30 pm	NE 96th Ave & Box 1424
2:32 pm	NE 16th St & Box 10009
2:34 pm	NE 96th Ave & Box 2358
2:38 pm	NE 103rd Ave & NE 28th Ln
2:39 pm	NE 103rd Ave & NE 17th Ln
2:41 pm	NE 103rd Ave & NE 11th Ct
2:42 pm	NE 103rd Ave & NE 106th Ct
02:48 pm	70 E & NE 71st Ave

34 OHS PM

TIME	LOCATION
2:25 pm	NE 8th St & NE 31st Ter (31 am)
2:28 pm	NE 8th St & NE 28th Ter (52 am)
2:35 pm	70 E & Box 11600 (31 am)
2:40 pm	70 E & Gracewood (07 am)
2:45 pm	70 E & NE Goodbread Ranch (07 am)
2:48 pm	NE 122nd Dr & NE 51st Ct (31 am)

35 OHSAM

TIME	LOCATION
6:18 am	SE 4th Ave & SE 4th St
6:26 am	SE 8th Ave & SE 3rd St
6:27 am	601 SE 8th Ave & SE 6th Ct
6:28 am	SE 8th Dr & SE 10th St
6:31 am	SE 9th Ave & SE 15th Ct
6:33 am	SE 21st St & SE 9th Ave

35 OHS PM

TIME	LOCATION
2:25 pm	SE 4th Ave & SE 4th St
2:29 pm	SE 8th Ave & SE 3rd St
2:30 pm	601 SE 8th Ave & SE 6th Ct
2:31 pm	SE 8th Dr & SE 10th St
2:32 pm	SE 9th Ave & SE 15th Ct
2:34 pm	SE 21st St & SE 9th Ave

36.1 OHS AM

TIME	LOCATION
6:10 am	70 W & Box 1659
6:12 am	98 N & NW 3rd Ln
6:13 am	NW 22nd Ave & NW 4th St
6:15 am	NW 26th Ave & NW 6th St
6:17 am	NW 8th St & End of Road
6:20 am	NW 28th Ave & NW 1st St

36.1 OHS PM

TIME	LOCATION
2:22 pm	70 W & Box 1659
2:24 pm	98 N & NW 3rd Ln
2:25 pm	NW 22nd Ave & NW 4th St
2:27 pm	NW 26th Ave & NW 6th St
2:29 pm	NW 8th St & End of Road
2:32 pm	NW 28th Ave & NW 1st St

36.2 OHS AM 12 PM

TIME	LOCATION
6:45 am	NW 36th St & NW 33rd Ave

39 OHS AM

TIME	LOCATION
6:24 am	NW 36th St & NW 28th Ave
6:25 am	NW 36th St & NW 23rd Ave

39 OHS PM

TIME	LOCATION
2:20pm	NW 36th St & NW 23rd Ave
2:21 pm	NW 36th St & NW 28th Ave

40 OHS AM

TIME	LOCATION
6:22 am	98 N & Box 2319
6:24 am	NW 18th St & NW 36th Ter
6:25 am	NW 18th St & NW 38th Ave
6:26 am	NW 18th St & NW 42nd Ave
6:27 am	NW 18th St & NW 45th Ter
6:37 am	NW 36th St & Box 1438

40 OHS PM

TIME	LOCATION
2:19 pm	NW 36th St & Box 1438
2:27 pm	98 N & Box 2319
2:30 pm	NW 18th St & NW 36th Ter
2:31 pm	NW 18th St & NW 38th Ave
2:33 pm	NW 18th St & NW 42nd Ave
2:35 pm	NW 18th St & NW 45th Ter

42 OHS AM

TIME	LOCATION
6:08 am	SE 34th Ave & Box 3337
6:09 am	SE 28th St & SE 35th Ave
6:10 am	SE 28th St & SE 37th Ave
6:11 am	SE 28th St & SE 39th Ave
6:12 am	SE 28th St & SE 44th Ave
6:15 am	SE 26th St & Box 4003
6:16 am	SE 26th St & SE 34th Dr
6:21 am	SE 38th Ave & Box 3421



OKEECHOBEE HIGH SCHOOL

BUS SCHEDULE

42 OHSPM

TIME	LOCATION
2:31 pm	SE 34th Ave & Box 3337
2:33 pm	SE 28th St & SE 35th Ave
2:34 pm	SE 28th St & SE 37th Ave
2:35 pm	SE 28th St & SE 39th Ave
2:37 pm	SE 28th St & SE 44th Ave
2:39 pm	SE 26th St & Box 4003
2:41 pm	SE 26th St & SE 34th Dr
2:46 pm	SE 38th Ave & Box 3421

50 OHS PM

TIME	LOCATION
ROUTE 52 AM	
2:32 pm	SE 40th Ave & SE 22nd Ct

51 OHSAM

TIME	LOCATION
5:42 am	NE 224th St & Larson 3
5:46 am	NE 224th St & Box 4800
5:48 am	NE 224th St & Box 5620
5:53 am	NE 48th Ave & Box 22800
5:54 am	NE 48th Ave & Box 22950
5:55 am	NE 48th Ave & Box 27000
5:56 am	NE 48th Ave & Box 28630
5:58 am	NE 304th St & NE 55th Ave
6:00 am	NE 304th St & NE 69th Ter
6:02 am	NE 304th St & Dairy Houses
6:02 am	NE 301st Blvd & Box 3850
6:04 am	NE 304th St & NE 23rd Way
6:19 am	441 N & MAC 4 Church

ATTN: SENIOR PARENTS!

Celebrate your senior's milestones with a commemorative ad in our Graduation Keepsake, coming in May 2023! Contact Angie Bridges now to secure your spot! 863.824.5942 or abridges@iniusa.org

51 OHSPM

TIME	LOCATION
2:27 pm	441 N & MAC 4 Church
2:44 pm	NE 304th St & NE 23rd Way
2:48 pm	NE 301st Blvd & Box 3850
2:49 pm	NE 304th St & Dairy Houses
2:50 pm	NE 304th St & NE 55th Ave
2:52 pm	NE 304th St & NE 69th Ter
2:59 pm	NE 48th Ave & Box 28630
3:03 pm	NE 48th Ave & Box 27000
3:06 pm	NE 48th Ave & Box 22950
3:10 pm	NE 48th Ave & Box 22800
3:17 pm	NE 224th St & Box 5620
3:19 pm	NE 224th St & Box 4800
3:20 pm	NE 224th St & Larson 3

52 OHSAM

TIME	LOCATION
ROUTE 50 PM	
5:59 am	SE 40th Ave & SE 22nd Ct

53 OHSAM

TIME	LOCATION
6:02 am	NE 70th Ave & NE 12 Ln
6:05 am	NE 64th Ave & NE 9th Ln
6:08 am	NE 62nd Ave & NE 9th Way
6:10 am	NE 62nd Ave & NE 5th St
6:14 am	70 E & NE 55th Trl
ROUTE 34 PM	
6:18 am	NE 8th St & NE 28th Ter

53 OHSPM

TIME	LOCATION
2:31 pm	NE 70th Ave & NE 12 Ln
2:34 pm	NE 64th Ave & NE 9th Ln
2:35 pm	NE 62nd Ave & NE 9th Way
2:36 pm	NE 62nd Ave & NE 5th St
2:41 pm	70 E & NE 55th Trl

54 OHS AM

TIME	LOCATION
5:46 am	Broadland Ln & Julius Ter
6:01 am	Rucks Dairy Rd & Box 2080
6:09 am	SW 131st Ave & SW 16th Dr

54 OHS PM

TIME	LOCATION
2:43 pm	Broadland Ln & Julius Ter
2:48 pm	Rucks Dairy Rd & Box 2080
2:55 pm	SW 131st Ave & SW 16th Dr

56 OHS AM

TIME	LOCATION
ROUTE 12 PM	
6:23 am	NW 36th St & NW 18th Ave

57 OHS AM

TIME	LOCATION
5:57 am	441 SE & SE 87 Blvd
5:58 am	SE 87th Trl & SE 68th Dr
5:59 am	SE 87th Blvd & SE 66th Dr
6:01 am	SE 86th Blvd & Box 6841 (
6:03 am	441 SE & Box 7777
6:07 am	441 SE & Box 6500
6:10 am	441 SE & SE 33rd Ter
6:15 am	441 SE & Box 833

57 OHS PM

TIME	LOCATION
2:24 pm	441 SE & Box 833
2:27 pm	441 SE & SE 33rd Ter
2:32 pm	441 SE & Box 6500
2:33 pm	441 SE & Box 7777
2:35 pm	441 SE & SE 88th Blvd
2:36 pm	SE 87th Trl & SE 68th Dr
2:37 pm	SE 87th Blvd & SE 66th Dr
2:39 pm	SE 86th Blvd & Box 6841

“Caring Beyond Prescription”

Heartland Discount Pharmacy

Full Service Retail Pharmacy

WE PROMISE TO PROVIDE QUALITY SERVICE AT LOWEST PRICES

Your Neighborhood Pharmacy Where Customer Service & Personal Attention are Our #1 Priorities



Get to know your neighbor.

It's time to change your pharmacy



PHARMACY THE WAY IT'S SUPPOSED TO BE

- ◆ Best cash price in town
- ◆ FREE same day home delivery
- ◆ We help patients not to fall into Medicare coverage gap or donut hole
- ◆ We match all Competitors' Generic Prescription Drug Programs
- ◆ We Accept All Insurances including Medicaid, Medicare, Part D and Worker's Compensation
- ◆ Flu and Pneumonia shots available
- ◆ Now providing non-sterile RX Compounding



Heartland Discount Pharmacy

407 S Parrott Ave, Okeechobee, FL 34974 Phone: (863) 763-7633 Fax: (863) 763-7666
www.heartlanddiscountpharmacy.com

Get your Covid-19 Vaccine Today

Scan QR code from your phone camera or visit our website for appointment

Walk-Ins Welcome

Pfizer (2 doses) **For 12 Years & Older** →



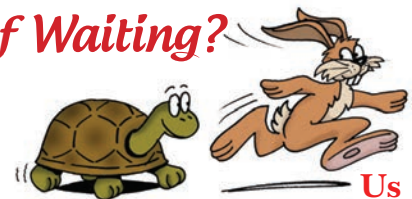
← **Moderna** (2 doses) **For 18 Years & Older**

Janseen (J&J) (1 dose) →



Tired of Waiting?

Other Pharmacies



863.763.7633
407 S. Parrott Ave • Okeechobee
Next to Arby's on 441

EXTENDED HOURS:
Monday-Friday 8am - 8pm • Sat. 9am - 5pm

